

mTOR antibody [C3], C-term

Cat. No. GTX101557

Host	Rabbit
Clonality	Polyclonal
Isotype	IgG
Applications	WB, ICC/IF, IHC-P, IP, ChIP assay
Reactivity	Human, Mouse, Rat

References (36)

★★★★☆ Review (6)

Package

100 µl, 25 µl

PRODUCT

Summary

mTOR antibody recognizes the mammalian target of rapamycin (mTOR), a member of the phosphatidylinositol 3-kinase-related kinase family of protein kinases. The mTOR protein consists of 2549 amino acids, and has a predicted molecular weight of 289 kDa. mTOR is the core protein of two mTOR complexes (mTORC1 and mTORC2) that drive pathways controlling various fundamental cellular functions, including cell metabolism, growth, migration, and cell death.

Applications

Application Note

*Optimal dilutions/concentrations should be determined by the researcher.

Suggested dilution	Recommended dilution
WB	1:500-1:3000
ICC/IF	1:100-1:1000
IHC-P	1:100-1:1000
IP	1:100-1:500
ChIP assay	Assay dependent

Not tested in other applications.

Calculated MW 289 kDa. ([Note](#))

Properties

Form	Liquid
Buffer	PBS, 20% Glycerol
Preservative	0.025% ProClin 300
Storage	Store as concentrated solution. Centrifuge briefly prior to opening vial. For short-term storage (1-2 weeks), store at 4°C. For long-term storage, aliquot and store at -20°C or below. Avoid multiple freeze-thaw cycles.
Concentration	0.05 mg/ml (Please refer to the vial label for the specific concentration.)
Immunogen	Recombinant protein encompassing a sequence within the C-terminus region of human mTOR. The exact sequence is proprietary.



For full product information, images and publications, please visit our [website](#).

Date 2026 / 04 / 04 Page 1 of 2

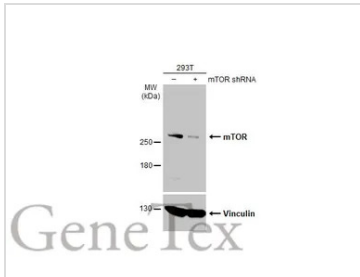
Purification Purified by antigen-affinity chromatography.

Conjugation Unconjugated

For laboratory research use only. Not for any clinical, therapeutic, or diagnostic use in humans or animals. Not for animal or human consumption.

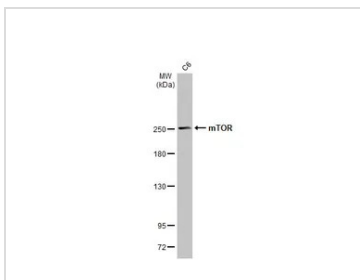
Note Purchasers shall not, and agree not to enable third parties to, analyze, copy, reverse engineer or otherwise attempt to determine the structure or sequence of the product.

DATA IMAGES



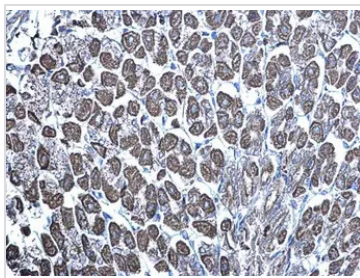
GTX101557 WB Image

Non-transfected (-) and transfected (+) 293T whole cell extracts (30 µg) were separated by 5% SDS-PAGE, and the membrane was blotted with mTOR antibody [C3], C-term (GTX101557) diluted at 1:500. The HRP-conjugated anti-rabbit IgG antibody (GTX213110-01) was used to detect the primary antibody.



GTX101557 WB Image

Whole cell extract (30 µg) was separated by 5% SDS-PAGE, and the membrane was blotted with mTOR antibody [C3], C-term (GTX101557) diluted at 1:1000. The HRP-conjugated anti-rabbit IgG antibody (GTX213110-01) was used to detect the primary antibody.



GTX101557 IHC-P Image

mTOR antibody [C3], C-term detects mTOR protein at mitochondria on mouse stomach by immunohistochemical analysis.

Sample: Paraffin-embedded mouse stomach.

mTOR antibody [C3], C-term (GTX101557) diluted at 1:500.

Antigen Retrieval: Trilogy™ (EDTA based, pH 8.0) buffer, 15min



For full product information, images and publications, please visit our [website](#).