

mTOR antibody [C1], Internal

Cat. No. GTX101558

Host	Rabbit
Clonality	Polyclonal
Isotype	IgG
Application	WB
Reactivity	Human, Mouse, Rat

Reference (1)
 Package
 100 µl, 25 µl

APPLICATION

Application Note

*Optimal dilutions/concentrations should be determined by the researcher.

Suggested dilution	Recommended dilution
WB	1:500-1:3000
Not tested in other applications.	

Calculated MW 289 kDa. ([Note](#))

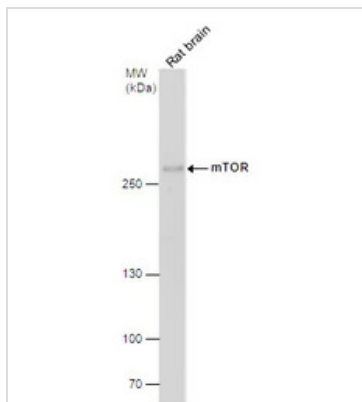
PROPERTIES

Form	Liquid
Buffer	0.1M Tris, 0.1M Glycine, 10% Glycerol
Preservative	0.01% Thimerosal
Storage	Store as concentrated solution. Centrifuge briefly prior to opening vial. For short-term storage (1-2 weeks), store at 4°C. For long-term storage, aliquot and store at -20°C or below. Avoid multiple freeze-thaw cycles.
Concentration	1 mg/ml (Please refer to the vial label for the specific concentration.)
Immunogen	Recombinant protein encompassing a sequence within the center region of human mTOR. The exact sequence is proprietary.
Purification	Purified by antigen-affinity chromatography.
Conjugation	Unconjugated
Note	For laboratory research use only. Not for any clinical, therapeutic, or diagnostic use in humans or animals. Not for animal or human consumption. Purchasers shall not, and agree not to enable third parties to, analyze, copy, reverse engineer or otherwise attempt to determine the structure or sequence of the product.



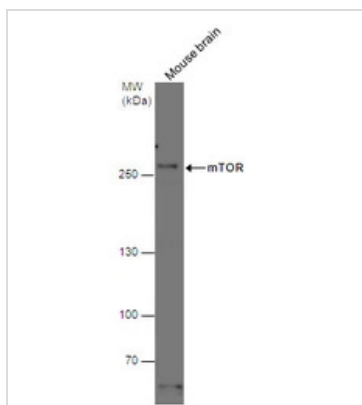
For full product information, images and publications, please visit our [website](#).

DATA IMAGES



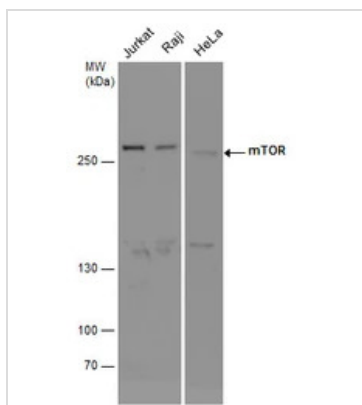
GTx101558 WB Image

mTOR antibody [C1], Internal detects mTOR protein by western blot analysis. Rat tissue extracts (50 µg) was separated by 5% SDS-PAGE, and the membrane was blotted with mTOR antibody [C1], Internal (GTx101558) diluted at 1:1000.



GTx101558 WB Image

mTOR antibody [C1], Internal detects mTOR protein by western blot analysis. Mouse tissue extracts (50 µg) was separated by 5% SDS-PAGE, and the membrane was blotted with mTOR antibody [C1], Internal (GTx101558) diluted at 1:500.



GTx101558 WB Image

mTOR antibody detects mTOR protein by western blot analysis. Various whole cell extracts (30 µg) were separated by 5% SDS-PAGE, and the membrane was blotted with mTOR antibody (GTx101558) diluted at a dilution of 1:1000.



For full product information, images and publications, please visit our [website](https://www.genetex.com).