

PAX8 antibody

Cat. No. GTX101583

Host	Rabbit
Clonality	Polyclonal
Isotype	IgG
Applications	WB, ICC/IF, IHC-P, IP, ChIP assay, IHC
Reactivity	Human, Mouse, Rat, Dog

References (5)

Package

100 µl, 25 µl

Applications

Application Note

*Optimal dilutions/concentrations should be determined by the researcher.

Suggested dilution	Recommended dilution
WB	1:5000-1:20000
ICC/IF	1:100-1:1000
IHC-P	1:100-1:1000
IP	1:500-1:1000
ChIP assay	Assay dependent
IHC	Assay dependent

Not tested in other applications.

Calculated MW 48 kDa. ([Note](#))**Product Note** Based on sequence homology, this antibody may cross react with PAX1, PAX2, PAX5 or PAX6 protein.

Properties

Form	Liquid
Buffer	PBS, 20% Glycerol
Preservative	0.025% ProClin 300
Storage	Store as concentrated solution. Centrifuge briefly prior to opening vial. For short-term storage (1-2 weeks), store at 4°C. For long-term storage, aliquot and store at -20°C or below. Avoid multiple freeze-thaw cycles.
Concentration	1.84 mg/ml (Please refer to the vial label for the specific concentration.)
Immunogen	Recombinant protein encompassing a sequence within the center region of human PAX8. The exact sequence is proprietary.
Purification	Purified by antigen-affinity chromatography.
Conjugation	Unconjugated

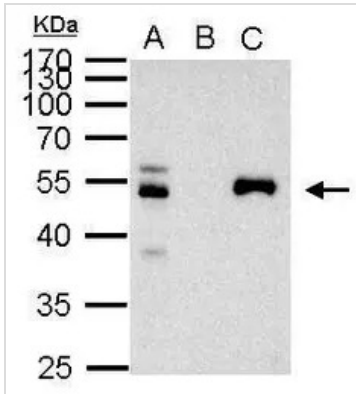


For full product information, images and publications, please visit our [website](#).

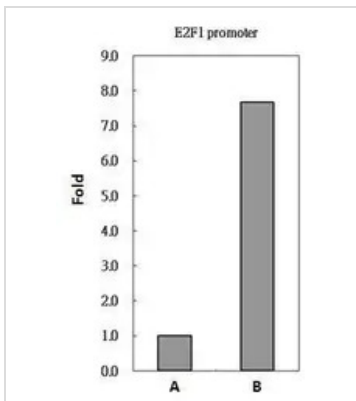
For laboratory research use only. Not for any clinical, therapeutic, or diagnostic use in humans or animals. Not for animal or human consumption.

Note

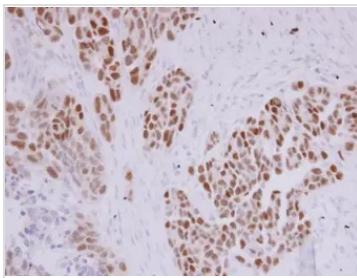
Purchasers shall not, and agree not to enable third parties to, analyze, copy, reverse engineer or otherwise attempt to determine the structure or sequence of the product.

DATA IMAGES

GTx101583 IP Image

PAX8 antibody immunoprecipitates PAX8 protein in IP experiments. IP Sample: 1000 µg 293T whole cell lysate/extract A. 40 µg 293T whole cell lysate/extract B. Control with 2 µg of preimmune rabbit IgG C. Immunoprecipitation of PAX8 protein by 2 µg of PAX8 antibody (GTx101583) 10% SDS-PAGE The immunoprecipitated PAX8 protein was detected by PAX8 antibody (GTx101583) diluted at 1:1000. EasyBlot anti-rabbit IgG (GTx221666-01) was used as a secondary reagent.


GTx101583 ChIP assay Image

PAX8 antibody immunoprecipitates PAX8 protein-DNA in ChIP experiments. ChIP Sample: 293T whole cell lysate/extract A. 5 µg preimmune rabbit IgG B. 5 µg of PAX8 antibody (GTx101583) The precipitated DNA was detected by PCR with primer set targeting to E2F1 promoter.


GTx101583 IHC-P Image

PAX8 antibody detects PAX8 protein at nucleolus by immunohistochemical analysis.

Sample: Paraffin-embedded DLD1 xenograft .

PAX8 antibody (GTx101583) diluted at 1:500.

Antigen Retrieval: Trilogy™ (EDTA based, pH 8.0) buffer, 15min



For full product information, images and publications, please visit our [website](https://www.genetex.com).