

ADAR1 antibody [N3C1], Internal

Cat. No. GTX101602

Host	Rabbit
Clonality	Polyclonal
Isotype	IgG
Applications	WB, ICC/IF, IHC-P, IP
Reactivity	Human, Rat

Package
100 µl, 25 µl

Applications

Application Note

*Optimal dilutions/concentrations should be determined by the researcher.

Suggested dilution	Recommended dilution
WB	1:500-1:3000
ICC/IF	1:100-1:1000
IHC-P	1:100-1:1000
IP	1:100-1:500

Not tested in other applications.

Calculated MW 136 kDa. ([Note](#))

Properties

Form	Liquid
Buffer	PBS, 1% BSA, 20% Glycerol
Preservative	0.025% ProClin 300
Storage	Store as concentrated solution. Centrifuge briefly prior to opening vial. For short-term storage (1-2 weeks), store at 4°C. For long-term storage, aliquot and store at -20°C or below. Avoid multiple freeze-thaw cycles.
Concentration	0.4 mg/ml (Please refer to the vial label for the specific concentration.)
Immunogen	Recombinant protein encompassing a sequence within the center region of human ADAR1. The exact sequence is proprietary.
Purification	Purified by antigen-affinity chromatography.
Conjugation	Unconjugated

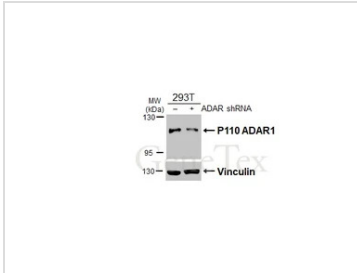


For full product information, images and publications, please visit our [website](#).

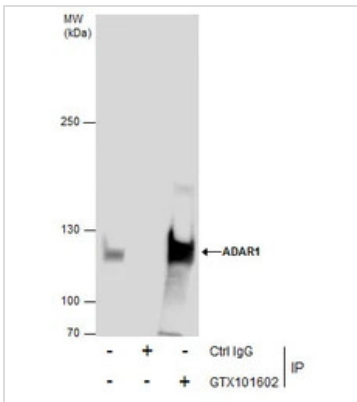
For laboratory research use only. Not for any clinical, therapeutic, or diagnostic use in humans or animals. Not for animal or human consumption.

Note

Purchasers shall not, and agree not to enable third parties to, analyze, copy, reverse engineer or otherwise attempt to determine the structure or sequence of the product.

DATA IMAGES

GTXT101602 WB Image

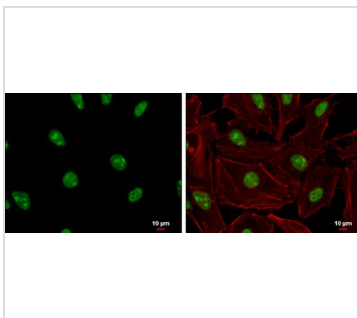
Non-transfected (–) and transfected (+) 293T whole cell extracts (30 µg) were separated by 5% SDS-PAGE, and the membrane was blotted with ADAR1 antibody [N3C1], Internal (GTXT101602) diluted at 1:3000. The HRP-conjugated anti-rabbit IgG antibody (GTXT213110-01) was used to detect the primary antibody.


GTXT101602 IP Image

Immunoprecipitation of ADAR1 protein from 293T whole cell extracts using 5 µg of ADAR1 antibody [N3C1], Internal (GTXT101602).

Western blot analysis was performed using ADAR1 antibody [N3C1], Internal (GTXT101602).

EasyBlot anti-Rabbit IgG (GTXT221666-01) was used as a secondary reagent.


GTXT101602 ICC/IF Image

ADAR1 antibody [N3C1], Internal detects ADAR1 protein at nucleolus and nucleus by immunofluorescent analysis.

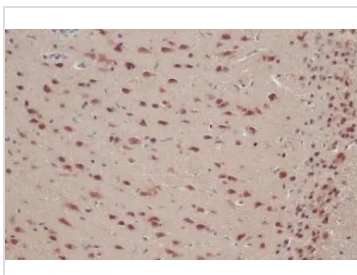
Sample: HeLa cells were fixed in 4% paraformaldehyde at RT for 15 min.

Green: ADAR1 protein stained by ADAR1 antibody [N3C1], Internal (GTXT101602) diluted at 1:200.

Red: phalloidin, a cytoskeleton marker, diluted at 1:200.

Blue: Hoechst 33342 staining.

Scale bar = 10 µm.


GTXT101602 IHC-P Image

ADAR1 antibody [N3C1], Internal detects ADAR1 protein at cytoplasm and nucleus by immunohistochemical analysis.

Sample: Paraffin-embedded rat brain.

ADAR1 stained by ADAR1 antibody [N3C1], Internal (GTXT101602) diluted at 1:500.

Antigen Retrieval: Citrate buffer, pH 6.0, 15 min



For full product information, images and publications, please visit our [website](https://www.genetex.com).