

AChE antibody

Cat. No. GTX101648

Host	Rabbit
Clonality	Polyclonal
Isotype	IgG
Application	WB, ICC/IF, IHC-P, IHC-Fr
Reactivity	Human, Mouse, Rat

Reference (1)
Package
100 µl, 25 µl

APPLICATION

Application Note

*Optimal dilutions/concentrations should be determined by the researcher.

Suggested dilution	Recommended dilution
WB	1:500-1:3000
ICC/IF	1:100-1:1000
IHC-P	1:100-1:1000
IHC-Fr	1:100-1:1000

Not tested in other applications.

Calculated MW 68 kDa. ([Note](#))

PROPERTIES

Form	Liquid
Buffer	PBS, 20% Glycerol
Preservative	0.025% ProClin 300
Storage	Store as concentrated solution. Centrifuge briefly prior to opening vial. For short-term storage (1-2 weeks), store at 4°C. For long-term storage, aliquot and store at -20°C or below. Avoid multiple freeze-thaw cycles.
Concentration	1.81 mg/ml (Please refer to the vial label for the specific concentration.)
Immunogen	Recombinant protein encompassing a sequence within the C-terminus region of human AChE. The exact sequence is proprietary.
Purification	Purified by antigen-affinity chromatography.
Conjugation	Unconjugated

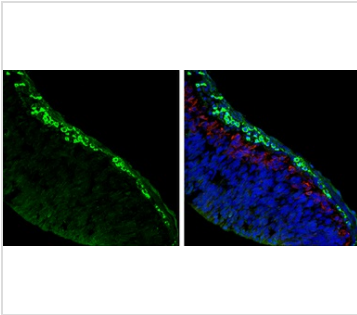


For full product information, images and publications, please visit our [website](#).

For laboratory research use only. Not for any clinical, therapeutic, or diagnostic use in humans or animals. Not for animal or human consumption.

Note

Purchasers shall not, and agree not to enable third parties to, analyze, copy, reverse engineer or otherwise attempt to determine the structure or sequence of the product.

DATA IMAGES

GTx101648 IHC-Fr Image

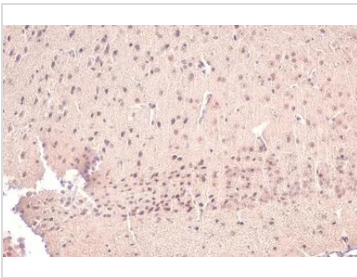
AChE antibody detects AChE protein expression by immunohistochemical analysis.

Sample: Frozen sectioned E13.5 Rat brain.

Green: AChE protein stained by AChE antibody (GTx101648) diluted at 1:250.

Red: beta Tubulin 3/ TUJ1, a mature neuron marker, stained by beta Tubulin 3/ TUJ1 antibody [GT11710] (GTx631836) diluted at 1:500.

Blue: Fluoroshield with DAPI (GTx30920).

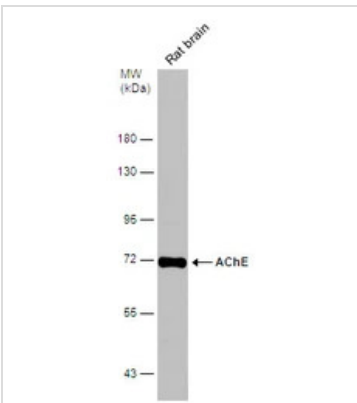

GTx101648 IHC-P Image

AChE antibody detects AChE protein at nucleus by immunohistochemical analysis.

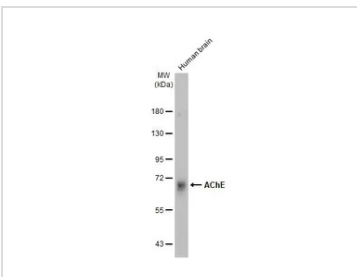
Sample: Paraffin-embedded mouse brain.

AChE stained by AChE antibody (GTx101648) diluted at 1:500.

Antigen Retrieval: Citrate buffer, pH 6.0, 15 min


GTx101648 WB Image

Rat tissue extract (50 µg) was separated by 7.5% SDS-PAGE, and the membrane was blotted with AChE antibody (GTx101648) diluted at 1:500.


GTx101648 WB Image

Human tissue extract (30 µg) was separated by 7.5% SDS-PAGE, and the membrane was blotted with AChE antibody (GTx101648) diluted at 1:500. The HRP-conjugated anti-rabbit IgG antibody (GTx213110-01) was used to detect the primary antibody.



For full product information, images and publications, please visit our [website](https://www.genetex.com).