

ILK antibody [N1C1]

Cat. No. GTX101691

Host	Rabbit
Clonality	Polyclonal
Isotype	IgG
Application	WB, IHC-P, IHC-Wm, IP, IHC
Reactivity	Human, Mouse, Rat, Zebrafish

Reference (6)

Package

100 µl, 25 µl

APPLICATION

Application Note

*Optimal dilutions/concentrations should be determined by the researcher.

Suggested dilution	Recommended dilution
WB	1:500-1:3000
IHC-P	1:100-1:1000
IHC-Wm	Assay dependent
IP	1:100-1:500
IHC	Assay dependent

Not tested in other applications.

Calculated MW 51 kDa. ([Note](#))

PROPERTIES

Form	Liquid
Buffer	0.1M Tris, 0.1M Glycine, 10% Glycerol
Preservative	0.01% Thimerosal
Storage	Store as concentrated solution. Centrifuge briefly prior to opening vial. For short-term storage (1-2 weeks), store at 4°C. For long-term storage, aliquot and store at -20°C or below. Avoid multiple freeze-thaw cycles.
Concentration	0.8 mg/ml (Please refer to the vial label for the specific concentration.)
Immunogen	Recombinant protein encompassing a sequence within the center region of human ILK. The exact sequence is proprietary.
Purification	Purified by antigen-affinity chromatography.
Conjugation	Unconjugated



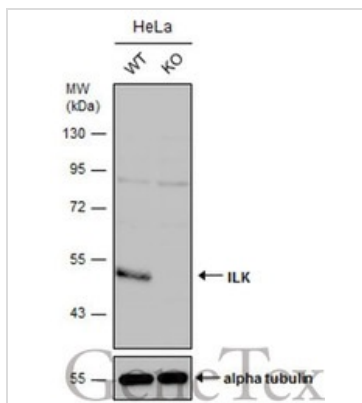
For full product information, images and publications, please visit our [website](#).

Date 2024 / 05 / 05 Page 1 of 2

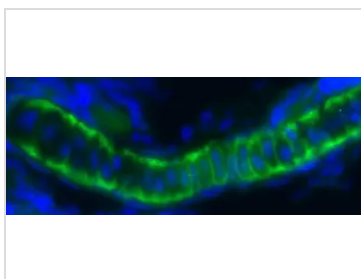
For laboratory research use only. Not for any clinical, therapeutic, or diagnostic use in humans or animals. Not for animal or human consumption.

Note

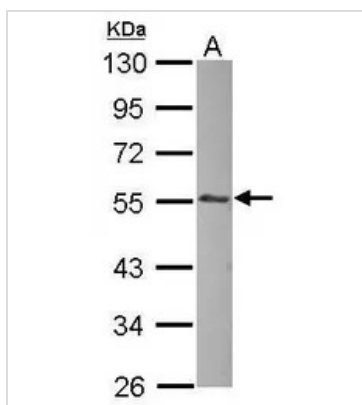
Purchasers shall not, and agree not to enable third parties to, analyze, copy, reverse engineer or otherwise attempt to determine the structure or sequence of the product.

DATA IMAGES

GTx101691 WB Image

Wild-type (WT) and ILK knockout (KO) HeLa cell extracts (30 µg) were separated by 10% SDS-PAGE, and the membrane was blotted with ILK antibody [N1C1] (GTx101691) diluted at 1:500. The HRP-conjugated anti-rabbit IgG antibody (GTx213110-01) was used to detect the primary antibody.


GTx101691 IHC-Wm Image

Immunofluorescent image of a pharyngeal cartilage section of a zebrafish embryo using ILK antibody [N1C1] (GTx101691) at a 1:200 dilution. ILK (Green)(This image was provided courtesy of the Schilling Lab at UC, Irvine.)


GTx101691 WB Image

Sample (30 µg of whole cell lysate)
A: zebrafish muscle
10% SDS PAGE
GTx101691 diluted at 1:1000



For full product information, images and publications, please visit our [website](https://www.genetex.com).