

## PGD antibody [N1N3]

Cat. No. GTX101703

Host	Rabbit
Clonality	Polyclonal
Isotype	IgG
Applications	WB, ICC/IF, IHC-P
Reactivity	Human, Mouse

References ( 2 )

Package

100 µl, 25 µl

## Applications

## Application Note

\*Optimal dilutions/concentrations should be determined by the researcher.

Suggested dilution	Recommended dilution
WB	1:500-1:3000
ICC/IF	1:100-1:1000
IHC-P	1:100-1:1000

Not tested in other applications.

Calculated MW 53 kDa. ( [Note](#) )

## Properties

Form	Liquid
Buffer	0.1M Tris, 0.1M Glycine, 10% Glycerol
Preservative	0.01% Thimerosal
Storage	Store as concentrated solution. Centrifuge briefly prior to opening vial. For short-term storage (1-2 weeks), store at 4°C. For long-term storage, aliquot and store at -20°C or below. Avoid multiple freeze-thaw cycles.
Concentration	1 mg/ml (Please refer to the vial label for the specific concentration.)
Immunogen	Recombinant protein encompassing a sequence within the center region of human PGD. The exact sequence is proprietary.
Purification	Purified by antigen-affinity chromatography.
Conjugation	Unconjugated

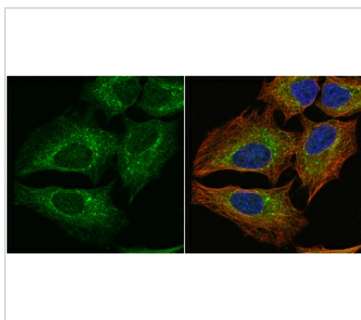
## Note

For laboratory research use only. Not for any clinical, therapeutic, or diagnostic use in humans or animals. Not for animal or human consumption.

Purchasers shall not, and agree not to enable third parties to, analyze, copy, reverse engineer or otherwise attempt to determine the structure or sequence of the product.



For full product information, images and publications, please visit our [website](#).

**DATA IMAGES**

**GTXT101703 ICC/IF Image**

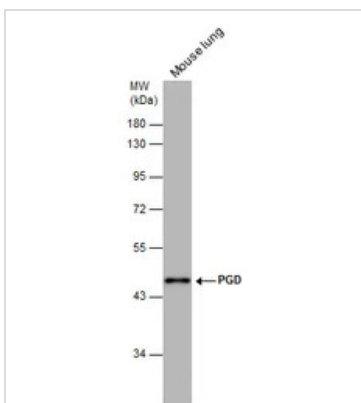
PGD antibody [N1N3] detects PGD protein at cytoplasm by immunofluorescent analysis.

Sample: HeLa cells were fixed in 4% paraformaldehyde at RT for 15 min.

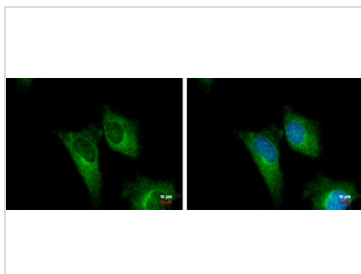
Green: PGD protein stained by PGD antibody [N1N3] (GTXT101703) diluted at 1:1000.

Red: alpha Tubulin, a cytoskeleton marker, stained by alpha Tubulin antibody [GT114] (GTXT628802) diluted at 1:1000.

Blue: Hoechst 33342 staining.


**GTXT101703 WB Image**

PGD antibody [N1N3] detects PGD protein by western blot analysis. Mouse tissue extracts (50 µg) was separated by 10% SDS-PAGE, and the membrane was blotted with PGD antibody [N1N3] (GTXT101703) diluted at 1:500. The HRP-conjugated anti-rabbit IgG antibody (GTXT213110-01) was used to detect the primary antibody.

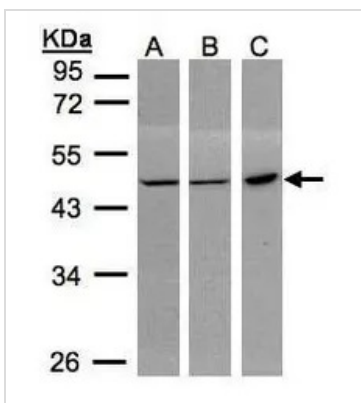

**GTXT101703 ICC/IF Image**

PGD antibody [N1N3] detects PGD protein at cytoplasm by immunofluorescent analysis.

Sample: HeLa cells were fixed in ice-cold MeOH for 5 min.

Green: PGD protein stained by PGD antibody [N1N3] (GTXT101703) diluted at 1:500.

Blue: Hoechst 33342 staining.


**GTXT101703 WB Image**

Sample(30 µg whole cell lysate)

A:293T

B:MOLT4 (GTXT27912)

C:Raji (GTXT27908)

10% SDS PAGE

GTXT101703 diluted at 1:1000

The HRP-conjugated anti-rabbit IgG antibody (GTXT213110-01) was used to detect the primary antibody.



For full product information, images and publications, please visit our [website](http://www.genetex.com).