

Moesin antibody [C2C3], C-term

Cat. No. GTX101708

Host	Rabbit
Clonality	Polyclonal
Isotype	IgG
Applications	WB, ICC/IF, IHC-P, IP
Reactivity	Human, Mouse, Rat

References (5)

★★★★★ Review (3)

Package

100 µl, 25 µl

Applications

Application Note

*Optimal dilutions/concentrations should be determined by the researcher.

Suggested dilution	Recommended dilution
WB	1:500-1:3000
ICC/IF	1:100-1:1000
IHC-P	1:100-1:1000
IP	1:100-1:500

Not tested in other applications.

Calculated MW 68 kDa. ([Note](#))

Product Note KO/KD validation is based on customer review data.

Properties

Form	Liquid
Buffer	PBS, 1% BSA, 20% Glycerol
Preservative	0.01% Thimerosal
Storage	Store as concentrated solution. Centrifuge briefly prior to opening vial. For short-term storage (1-2 weeks), store at 4°C. For long-term storage, aliquot and store at -20°C or below. Avoid multiple freeze-thaw cycles.
Concentration	0.21 mg/ml (Please refer to the vial label for the specific concentration.)
Immunogen	Recombinant protein encompassing a sequence within the C-terminus region of human Moesin. The exact sequence is proprietary.
Purification	Purified by antigen-affinity chromatography.
Conjugation	Unconjugated



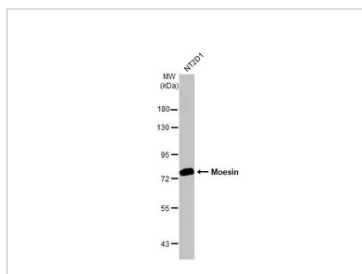
For full product information, images and publications, please visit our [website](#).

Date 2026 / 01 / 12 Page 1 of 2

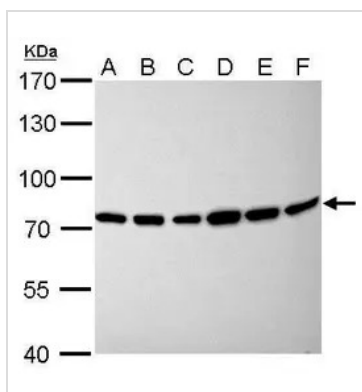
For laboratory research use only. Not for any clinical, therapeutic, or diagnostic use in humans or animals. Not for animal or human consumption.

Note

Purchasers shall not, and agree not to enable third parties to, analyze, copy, reverse engineer or otherwise attempt to determine the structure or sequence of the product.

DATA IMAGES

GTX101708 WB Image

Whole cell extract (30 µg) was separated by 7.5% SDS-PAGE, and the membrane was blotted with Moesin antibody [C2C3], C-term (GTX101708) diluted at 1:1000. The HRP-conjugated anti-rabbit IgG antibody (GTX213110-01) was used to detect the primary antibody.

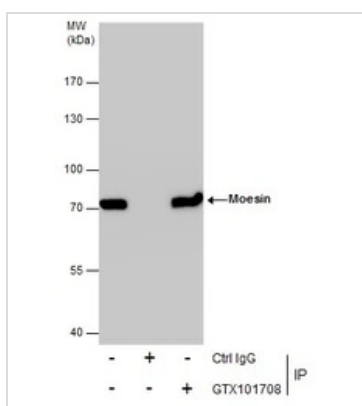

GTX101708 WB Image

Moesin antibody [C2C3], C-term detects MSN protein by Western blot analysis.

- A. 30 µg GL261 whole cell lysate/extract
- B. 30 µg C8D30 whole cell lysate/extract
- C. 30 µg NIH-3T3 whole cell lysate/extract
- D. 30 µg BCL-1 whole cell lysate/extract
- E. 30 µg Raw264.7 whole cell lysate/extract
- F. 30 µg C2C12 whole cell lysate/extract

7.5 % SDS-PAGE

Moesin antibody [C2C3], C-term (GTX101708) dilution: 1:1000


GTX101708 IP Image

Immunoprecipitation of Moesin protein from A431 whole cell extracts using 5 µg of Moesin antibody [C2C3], C-term (GTX101708).

Western blot analysis was performed using Moesin antibody [C2C3], C-term (GTX101708).

EasyBlot anti-Rabbit IgG (GTX221666-01) was used as a secondary reagent.



For full product information, images and publications, please visit our [website](https://www.genetex.com).