

## Ferritin Heavy Chain antibody [N1C3]

Cat. No. GTX101733

Host	Rabbit
Clonality	Polyclonal
Isotype	IgG
Application	WB, ICC/IF, IHC-P
Reactivity	Human, Mouse, Rat

Reference ( 2 )

★★★★☆ Review ( 1 )

Package

100 µl, 25 µl

## APPLICATION

## Application Note

\*Optimal dilutions/concentrations should be determined by the researcher.

Suggested dilution	Recommended dilution
WB	1:500-1:3000
ICC/IF	1:100-1:1000
IHC-P	1:100-1:1000

Not tested in other applications.

Calculated MW 21 kDa. ( [Note](#) )

## PROPERTIES

Form	Liquid
Buffer	PBS, 20% Glycerol
Preservative	0.025% ProClin 300
Storage	Store as concentrated solution. Centrifuge briefly prior to opening vial. For short-term storage (1-2 weeks), store at 4°C. For long-term storage, aliquot and store at -20°C or below. Avoid multiple freeze-thaw cycles.
Concentration	1.25 mg/ml (Please refer to the vial label for the specific concentration.)
Immunogen	Recombinant protein encompassing a sequence within the center region of human Ferritin Heavy Chain. The exact sequence is proprietary.
Purification	Purified by antigen-affinity chromatography.
Conjugation	Unconjugated

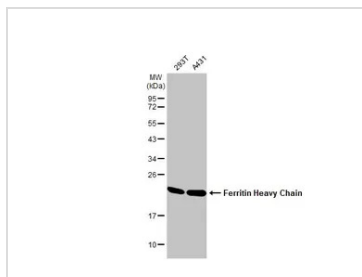
## Note

For laboratory research use only. Not for any clinical, therapeutic, or diagnostic use in humans or animals. Not for animal or human consumption.

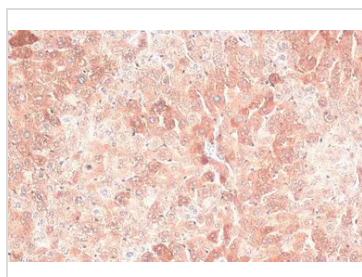
Purchasers shall not, and agree not to enable third parties to, analyze, copy, reverse engineer or otherwise attempt to determine the structure or sequence of the product.



For full product information, images and publications, please visit our [website](#).

**DATA IMAGES**

**GTX101733 WB Image**

Various whole cell extracts (30  $\mu$ g) were separated by 12% SDS-PAGE, and the membrane was blotted with Ferritin Heavy Chain antibody [N1C3] (GTX101733) diluted at 1:1000. The HRP-conjugated anti-rabbit IgG antibody (GTX213110-01) was used to detect the primary antibody.

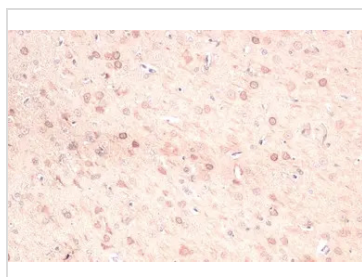

**GTX101733 IHC-P Image**

Ferritin Heavy Chain antibody [N1C3] detects Ferritin Heavy Chain protein at cytoplasm by immunohistochemical analysis.

Sample: Paraffin-embedded mouse liver.

Ferritin Heavy Chain stained by Ferritin Heavy Chain antibody [N1C3] (GTX101733) diluted at 1:500.

Antigen Retrieval: Citrate buffer, pH 6.0, 15 min

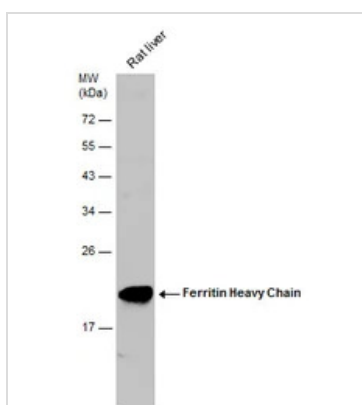

**GTX101733 IHC-P Image**

Ferritin Heavy Chain antibody [N1C3] detects Ferritin Heavy Chain protein at cytoplasm by immunohistochemical analysis.

Sample: Paraffin-embedded rat brain.

Ferritin Heavy Chain stained by Ferritin Heavy Chain antibody [N1C3] (GTX101733) diluted at 1:500.

Antigen Retrieval: Citrate buffer, pH 6.0, 15 min


**GTX101733 WB Image**

Rat tissue extract (50  $\mu$ g) was separated by 12% SDS-PAGE, and the membrane was blotted with Ferritin Heavy Chain antibody [N1C3] (GTX101733) diluted at 1:500.



For full product information, images and publications, please visit our [website](https://www.genetex.com).