

TUFM antibody [N3C3]

Cat. No. GTX101764

Host	Rabbit
Clonality	Polyclonal
Isotype	IgG
Applications	WB, IHC-P, IP, PLA
Reactivity	Human

References (2)

Package

100 µl, 25 µl

Applications

Application Note

*Optimal dilutions/concentrations should be determined by the researcher.

Suggested dilution	Recommended dilution
WB	1:500-1:3000
IHC-P	1:100-1:1000
IP	1:100-1:500
PLA	Assay dependent

Not tested in other applications.

Calculated MW 50 kDa. ([Note](#))

Properties

Form	Liquid
Buffer	PBS, 40% Glycerol
Preservative	0.01% Thimerosal
Storage	Store as concentrated solution. Centrifuge briefly prior to opening vial. For short-term storage (1-2 weeks), store at 4°C. For long-term storage, aliquot and store at -20°C or below. Avoid multiple freeze-thaw cycles.
Concentration	1 mg/ml (Please refer to the vial label for the specific concentration.)
Immunogen	Recombinant protein encompassing a sequence within the center region of human TUFM. The exact sequence is proprietary.
Purification	Purified by antigen-affinity chromatography.
Conjugation	Unconjugated



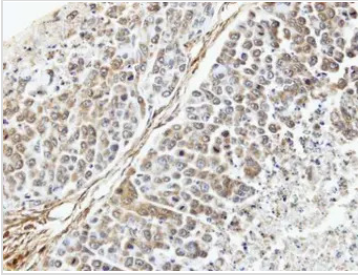
For full product information, images and publications, please visit our [website](#).

For laboratory research use only. Not for any clinical, therapeutic, or diagnostic use in humans or animals. Not for animal or human consumption.

Note

Purchasers shall not, and agree not to enable third parties to, analyze, copy, reverse engineer or otherwise attempt to determine the structure or sequence of the product.

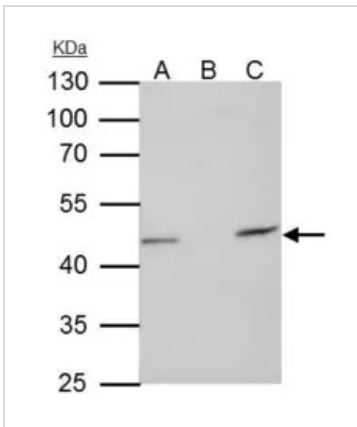
DATA IMAGES



GTX101764 IHC-P Image

Immunohistochemical analysis of paraffin-embedded SNU16 xenograft, using TUFM(GTX101764) antibody at 1:100 dilution.

Antigen Retrieval: Trilogy™ (EDTA based, pH 8.0) buffer, 15min



GTX101764 IP Image

TUFM antibody [N3C3] immunoprecipitates TUFM protein in IP experiments.

IP samples: HepG2 whole cell extract

A. 35 µg HepG2 whole cell extract

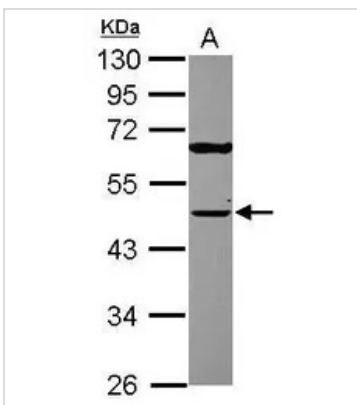
B. Control with 4 µg of preimmune Rabbit IgG

C. Immunoprecipitation of TUFM protein by 4 µg TUFM antibody [N3C3] (GTX101764)

10 % SDS-PAGE

The immunoprecipitated TUFM protein was detected by TUFM antibody [N3C3] (GTX101764) diluted at 1:1000.

[EasyBlot anti-rabbit IgG (GTX221666-01) was used as a secondary reagent]



GTX101764 WB Image

Sample (30 ug of whole cell lysate)

A: A431 (GTX27909)

10% SDS PAGE

GTX101764 diluted at 1:2000



For full product information, images and publications, please visit our [website](https://www.genetex.com).