

Fibrillarin antibody

Cat. No. GTX101807

Host	Rabbit
Clonality	Polyclonal
Isotype	IgG
Application	WB, ICC/IF, IP
Reactivity	Human, Mouse, Rat

[Reference \(2 \)](#)

Package

100 µl, 25 µl

APPLICATION

Application Note

*Optimal dilutions/concentrations should be determined by the researcher.

Suggested dilution	Recommended dilution
WB	1:500-1:3000
ICC/IF	1:100-1:1000
IP	1:100-1:500

Not tested in other applications.

Calculated MW 34 kDa. ([Note](#))

Product Note IP/MS validation was supported by references (PMID:30377378)

PROPERTIES

Form	Liquid
Buffer	PBS, 1% BSA, 20% Glycerol
Preservative	0.01% Thimerosal
Storage	Store as concentrated solution. Centrifuge briefly prior to opening vial. For short-term storage (1-2 weeks), store at 4°C. For long-term storage, aliquot and store at -20°C or below. Avoid multiple freeze-thaw cycles.
Concentration	1 mg/ml (Please refer to the vial label for the specific concentration.)
Immunogen	Recombinant protein encompassing a sequence within the center region of human Fibrillarin. The exact sequence is proprietary.
Purification	Purified by antigen-affinity chromatography.
Conjugation	Unconjugated



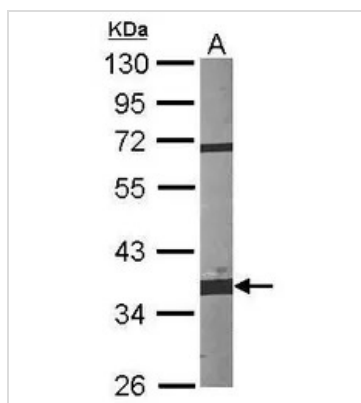
For full product information, images and publications, please visit our [website](#).

For laboratory research use only. Not for any clinical, therapeutic, or diagnostic use in humans or animals. Not for animal or human consumption.

Note

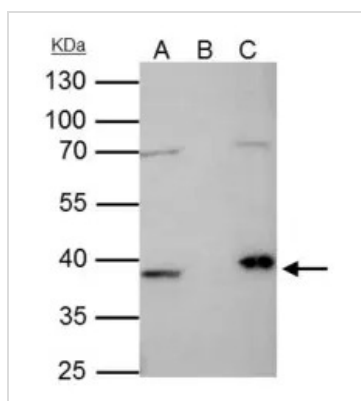
Purchasers shall not, and agree not to enable third parties to, analyze, copy, reverse engineer or otherwise attempt to determine the structure or sequence of the product.

DATA IMAGES



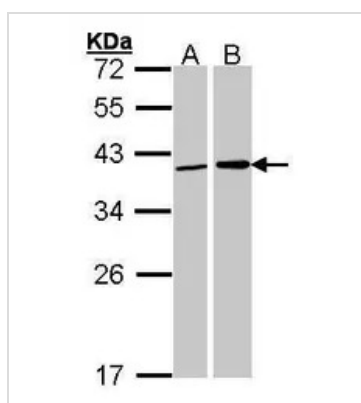
GTX101807 WB Image

Sample (30 ug of whole cell lysate)
A:NIH-3T3 10% SDS PAGE
GTX101807 diluted at 1:1000



GTX101807 IP Image

Fibrillarin antibody immunoprecipitates FBL protein in IP experiments.
IP samples: HeLa nuclear extract
A. 35 µg HeLa nuclear extract
B. Control with 4 µg of preimmune Rabbit IgG
C. Immunoprecipitation of FBL protein by 4 µg Fibrillarin antibody (GTX101807)
10 % SDS-PAGE
The immunoprecipitated FBL protein was detected by Fibrillarin antibody (GTX101807) diluted at 1:1000.
[EasyBlot anti-rabbit IgG (GTX221666-01) was used as a secondary reagent]



GTX101807 WB Image

Sample (30 ug of whole cell lysate)
A: 293T
B: H1299
12% SDS PAGE
GTX101807 diluted at 1:1000



For full product information, images and publications, please visit our [website](https://www.genetex.com).