

HPCAL1 antibody [N1C3]

Cat. No. GTX101816

Host	Rabbit
Clonality	Polyclonal
Isotype	IgG
Applications	WB, IHC-P
Reactivity	Human, Mouse

Package
100 µl, 25 µl

Applications

Application Note

*Optimal dilutions/concentrations should be determined by the researcher.

Suggested dilution	Recommended dilution
WB	1:500-1:3000
IHC-P	Assay dependent

Not tested in other applications.

Calculated MW 22 kDa. ([Note](#))

Properties

Form	Liquid
Buffer	0.1M Tris, 0.1M Glycine, 10% Glycerol; 1% BSA
Preservative	0.01% Thimerosal
Storage	Store as concentrated solution. Centrifuge briefly prior to opening vial. For short-term storage (1-2 weeks), store at 4°C. For long-term storage, aliquot and store at -20°C or below. Avoid multiple freeze-thaw cycles.
Concentration	0.23 mg/ml (Please refer to the vial label for the specific concentration.)
Immunogen	Recombinant protein encompassing a sequence within the center region of human HPCAL1. The exact sequence is proprietary.
Purification	Purified by antigen-affinity chromatography.
Conjugation	Unconjugated

Note

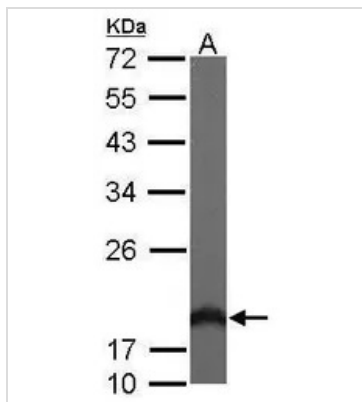
For laboratory research use only. Not for any clinical, therapeutic, or diagnostic use in humans or animals. Not for animal or human consumption.

Purchasers shall not, and agree not to enable third parties to, analyze, copy, reverse engineer or otherwise attempt to determine the structure or sequence of the product.



For full product information, images and publications, please visit our [website](#).

DATA IMAGES

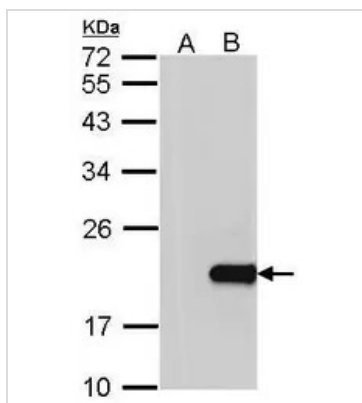
**GTX101816 WB Image**

Sample (50 ug of whole cell lysate)

A: Mouse brain

12% SDS PAGE

GTX101816 diluted at 1:1000

**GTX101816 WB Image**

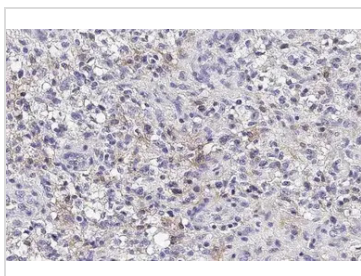
Western Blot analysis of HPCAL1 expression in transfected 293T cell line by HPCAL1 polyclonal antibody.

A: Non-transfected lysate.

B: HPCAL1 transfected lysate.

12% SDS PAGE

GTX101816 diluted at 1:500

**GTX101816 IHC-P Image**

HPCAL1 antibody [N1C3] detects HPCAL1 protein at cell membrane by immunohistochemical analysis.

Sample: Paraffin-embedded human glioblastoma.

HPCAL1 stained by HPCAL1 antibody [N1C3] (GTX101816) diluted at 1:500.

Antigen Retrieval: Citrate buffer, pH 6.0, 15 min



For full product information, images and publications, please visit our [website](#).