

## hnRNP AB antibody

Cat. No. GTX101852

Host	Rabbit
Clonality	Polyclonal
Isotype	IgG
Applications	WB, ICC/IF, IHC-P, IHC-Wm, IP, ChIP-seq
Reactivity	Human, Zebrafish

References ( 1 )

Package

100 µl, 25 µl

## Applications

## Application Note

\*Optimal dilutions/concentrations should be determined by the researcher.

Suggested dilution	Recommended dilution
WB	1:500-1:3000
ICC/IF	1:100-1:1000
IHC-P	1:100-1:1000
IHC-Wm	Assay dependent
IP	Assay dependent
ChIP-seq	Assay dependent

Not tested in other applications.

Calculated MW 36 kDa. ( [Note](#) )

## Properties

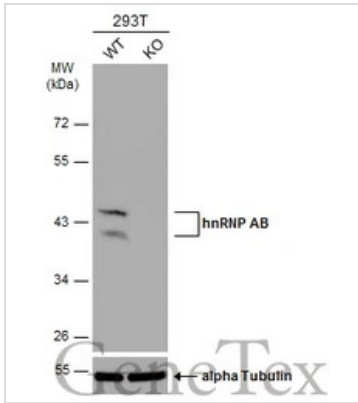
Form	Liquid
Buffer	PBS, 1% BSA, 20% Glycerol
Preservative	0.01% Thimerosal
Storage	Store as concentrated solution. Centrifuge briefly prior to opening vial. For short-term storage (1-2 weeks), store at 4°C. For long-term storage, aliquot and store at -20°C or below. Avoid multiple freeze-thaw cycles.
Concentration	0.26 mg/ml (Please refer to the vial label for the specific concentration.)
Immunogen	Recombinant protein encompassing a sequence within the center region of human hnRNP AB. The exact sequence is proprietary.
Purification	Purified by antigen-affinity chromatography.
Conjugation	Unconjugated

For full product information, images and publications, please visit our [website](#).

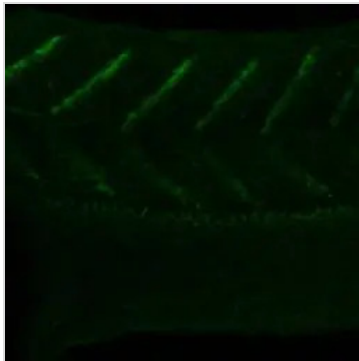
For laboratory research use only. Not for any clinical, therapeutic, or diagnostic use in humans or animals. Not for animal or human consumption.

**Note**

Purchasers shall not, and agree not to enable third parties to, analyze, copy, reverse engineer or otherwise attempt to determine the structure or sequence of the product.

**DATA IMAGES**

**GTX101852 WB Image**

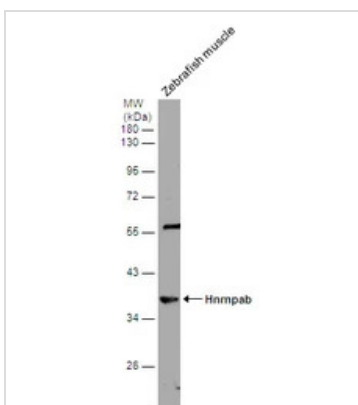
Wild-type (WT) and hnRNP AB knockout (KO) 293T cell extracts (30 µg) were separated by 10% SDS-PAGE, and the membrane was blotted with hnRNP AB antibody (GTX101852) diluted at 1:1000. The HRP-conjugated anti-rabbit IgG antibody (GTX213110-01) was used to detect the primary antibody.


**GTX101852 IHC-Wm Image**

hnRNP AB antibody detects hnRNP AB protein at somite boundary on whole-mount zebrafish embryos by immunohistochemical analysis.

Sample: Paraformaldehyde-fixed zebrafish embryos.

hnRNP AB antibody (GTX101852) dilution: 1:200.


**GTX101852 WB Image**

Zebrafish tissue extract (30 µg) were separated by 10% SDS-PAGE, and the membrane was blotted with hnRNP AB antibody (GTX101852) diluted at 1:1000.



For full product information, images and publications, please visit our [website](https://www.genetex.com).