

VRL1 antibody [C2C3], C-term

Cat. No. GTX101868

Host	Rabbit
Clonality	Polyclonal
Isotype	IgG
Application	WB, IHC-P
Reactivity	Human

Reference (1)
 Package
 100 µl, 25 µl

APPLICATION

Application Note

*Optimal dilutions/concentrations should be determined by the researcher.

Suggested dilution	Recommended dilution
WB	1:500-1:3000
IHC-P	1:100-1:1000

Not tested in other applications.

Calculated MW 86 kDa. ([Note](#))

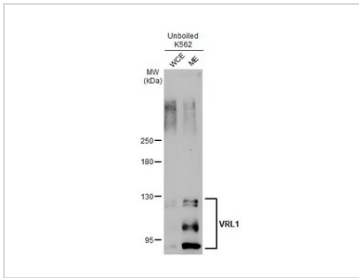
PROPERTIES

Form	Liquid
Buffer	PBS, 20% Glycerol
Preservative	0.025% ProClin 300
Storage	Store as concentrated solution. Centrifuge briefly prior to opening vial. For short-term storage (1-2 weeks), store at 4°C. For long-term storage, aliquot and store at -20°C or below. Avoid multiple freeze-thaw cycles.
Concentration	1.03 mg/ml (Please refer to the vial label for the specific concentration.)
Immunogen	Recombinant protein encompassing a sequence within the Intracellular domain of human VRL1. The exact sequence is proprietary.
Purification	Purified by antigen-affinity chromatography.
Conjugation	Unconjugated
Note	For laboratory research use only. Not for any clinical, therapeutic, or diagnostic use in humans or animals. Not for animal or human consumption. Purchasers shall not, and agree not to enable third parties to, analyze, copy, reverse engineer or otherwise attempt to determine the structure or sequence of the product.



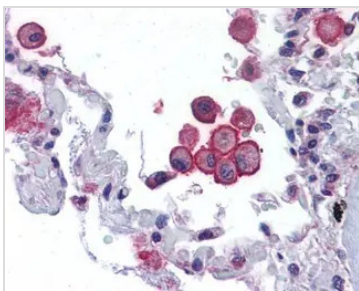
For full product information, images and publications, please visit our [website](#).

DATA IMAGES



GTX101868 WB Image

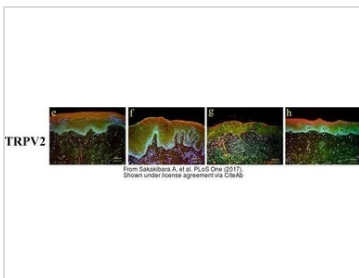
Unboiled K562 whole cell and membrane extracts (30 µg) were separated by 5% SDS-PAGE, and the membrane was blotted with VRL1 antibody [C2C3], C-term (GTX101868) diluted at 1:500. The HRP-conjugated anti-rabbit IgG antibody (GTX213110-01) was used to detect the primary antibody. (WCE: whole cell extract; ME: membrane extract)



GTX101868 IHC-P Image

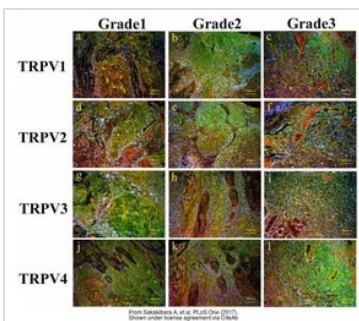
Immunohistochemical analysis of paraffin-embedded human lung, using VRL1(GTX101868) antibody(10 µg/ml).

Antigen Retrieval: Trilogy™ (EDTA based, pH 8.0) buffer, 15min



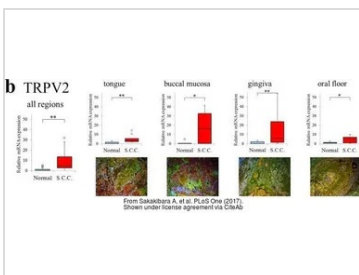
GTX101868 IHC-P Image

The data was published in the journal PLoS One in 2017. [PMID: 28081185](https://pubmed.ncbi.nlm.nih.gov/28081185/)



GTX101868 IHC-P Image

The data was published in the journal PLoS One in 2017. [PMID: 28081185](https://pubmed.ncbi.nlm.nih.gov/28081185/)



GTX101868 IHC-P Image

The data was published in the journal PLoS One in 2017. [PMID: 28081185](https://pubmed.ncbi.nlm.nih.gov/28081185/)



For full product information, images and publications, please visit our [website](https://www.genetex.com).