

alpha Cardiac Muscle Actin antibody

Cat. No. GTX101876

Host	Rabbit
Clonality	Polyclonal
Isotype	IgG
Applications	WB, ICC/IF, IHC-P
Reactivity	Human, Mouse, Rat

References (10)

Package

100 µl, 25 µl

Applications

Application Note

*Optimal dilutions/concentrations should be determined by the researcher.

Suggested dilution	Recommended dilution
WB	1:500-1:10000
ICC/IF	1:100-1:1000
IHC-P	1:100-1:1000

Not tested in other applications.

Calculated MW 42 kDa. ([Note](#))

Properties

Form	Liquid
Buffer	PBS, 20% Glycerol
Preservative	0.025% ProClin 300
Storage	Store as concentrated solution. Centrifuge briefly prior to opening vial. For short-term storage (1-2 weeks), store at 4°C. For long-term storage, aliquot and store at -20°C or below. Avoid multiple freeze-thaw cycles.
Concentration	1.39 mg/ml (Please refer to the vial label for the specific concentration.)
Immunogen	Recombinant protein encompassing a sequence within the center region of human alpha Cardiac Muscle Actin. The exact sequence is proprietary.
Purification	Purified by antigen-affinity chromatography.
Conjugation	Unconjugated

Note

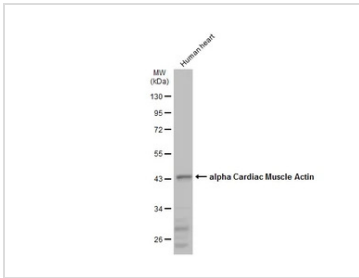
For laboratory research use only. Not for any clinical, therapeutic, or diagnostic use in humans or animals. Not for animal or human consumption.

Purchasers shall not, and agree not to enable third parties to, analyze, copy, reverse engineer or otherwise attempt to determine the structure or sequence of the product.



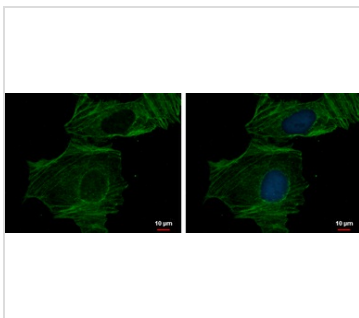
For full product information, images and publications, please visit our [website](#).

DATA IMAGES



GTX101876 WB Image

Human tissue extract (30 µg) was separated by 10% SDS-PAGE, and the membrane was blotted with alpha Cardiac Muscle Actin antibody (GTX101876) diluted at 1:1000. The HRP-conjugated anti-rabbit IgG antibody (GTX213110-01) was used to detect the primary antibody.



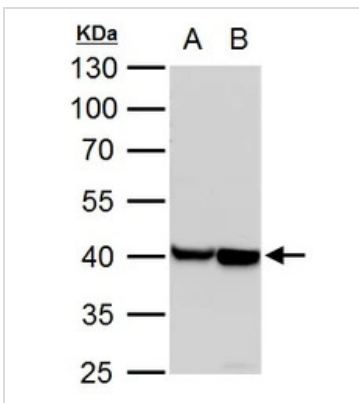
GTX101876 ICC/IF Image

alpha Actin (cardiac muscle) antibody detects alpha Actin (cardiac muscle) protein at cytoskeleton by immunofluorescent analysis.

Sample: HeLa cells were fixed in 0.5% Triton X-100 for 1 min, then ice-cold methanol for 5 min.

Green: alpha Actin (cardiac muscle) protein stained by alpha Actin (cardiac muscle) antibody (GTX101876) diluted at 1:200.

Blue: Hoechst 33342 staining.



GTX101876 WB Image

alpha Actin (cardiac muscle) antibody detects alpha Actin (cardiac muscle) protein by western blot analysis.

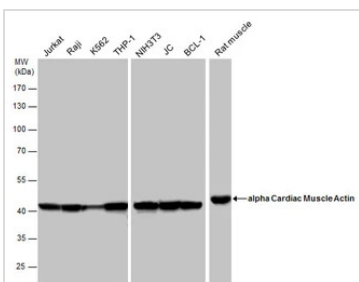
A. 30 µg PC-12 whole cell lysate/extract

B. 30 µg Rat2 whole cell lysate/extract

10% SDS-PAGE

alpha Actin (cardiac muscle) antibody (GTX101876) dilution: 1:10000

The HRP-conjugated anti-rabbit IgG antibody (GTX213110-01) was used to detect the primary antibody.



GTX101876 WB Image

alpha Cardiac Muscle Actin antibody detects alpha Cardiac Muscle Actin protein by western blot analysis.

Various whole cell extracts (30 µg) and Rat tissue extracts (50 µg) were separated by 10% SDS-PAGE, and the membrane was blotted with alpha Cardiac Muscle Actin antibody (GTX101876) diluted at a dilution of 1:10000. The HRP-conjugated anti-rabbit IgG antibody (GTX213110-01) was used to detect the primary antibody.



For full product information, images and publications, please visit our [website](https://www.genetex.com).