

Ribophorin I antibody [C2C3], C-term

Cat. No. GTX101888

Host	Rabbit
Clonality	Polyclonal
Isotype	IgG
Applications	WB, ICC/IF, IHC-P, IP
Reactivity	Human

References (1)

Package

100 µl, 25 µl

Applications

Application Note

*Optimal dilutions/concentrations should be determined by the researcher.

Suggested dilution	Recommended dilution
WB	1:500-1:3000
ICC/IF	1:100-1:1000
IHC-P	1:100-1:1000
IP	Assay dependent

Not tested in other applications.

Calculated MW 69 kDa. ([Note](#))

Properties

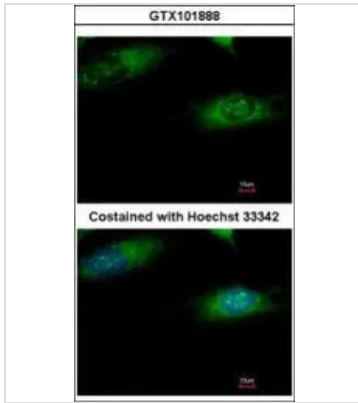
Form	Liquid
Buffer	PBS, 40% Glycerol
Preservative	0.01% Thimerosal
Storage	Store as concentrated solution. Centrifuge briefly prior to opening vial. For short-term storage (1-2 weeks), store at 4°C. For long-term storage, aliquot and store at -20°C or below. Avoid multiple freeze-thaw cycles.
Concentration	1 mg/ml (Please refer to the vial label for the specific concentration.)
Immunogen	Recombinant protein encompassing a sequence within the C-terminus region of human Ribophorin I. The exact sequence is proprietary.
Purification	Purified by antigen-affinity chromatography.
Conjugation	Unconjugated

For full product information, images and publications, please visit our [website](#).

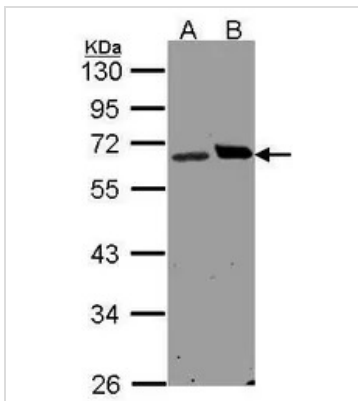
For laboratory research use only. Not for any clinical, therapeutic, or diagnostic use in humans or animals. Not for animal or human consumption.

Note

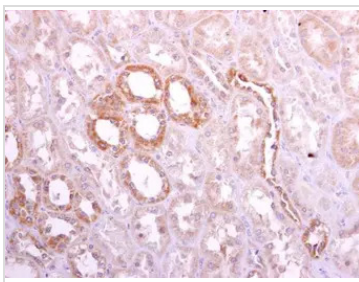
Purchasers shall not, and agree not to enable third parties to, analyze, copy, reverse engineer or otherwise attempt to determine the structure or sequence of the product.

DATA IMAGES

GTx101888 ICC/IF Image

Immunofluorescence analysis of methanol-fixed HeLa, using Ribophorin I (GTx101888) antibody at 1:500 dilution.


GTx101888 WB Image

Sample (30 µg of whole cell lysate)
 A: H1299
 B: Hep G2 (GTx27900)
 10% SDS PAGE
 GTx101888 diluted at 1:1500


GTx101888 IHC-P Image

Ribophorin I antibody [C2C3], C-term detects Ribophorin I protein at cytoplasm on human normal kidney by immunohistochemical analysis.

Sample: Paraffin-embedded human normal kidney.

Ribophorin I antibody [C2C3], C-term (GTx101888) diluted at 1:500.

Antigen Retrieval: Trilogy™ (EDTA based, pH 8.0) buffer, 15min



For full product information, images and publications, please visit our [website](https://www.genetex.com).