

UQCRC1 antibody

Cat. No. GTX101896

| | |
|--------------|------------|
| Host | Rabbit |
| Clonality | Polyclonal |
| Isotype | IgG |
| Applications | WB, ICC/IF |
| Reactivity | Human |

References (1)

Package

100 µl, 25 µl

Applications

Application Note

*Optimal dilutions/concentrations should be determined by the researcher.

| Suggested dilution | Recommended dilution |
|--------------------|----------------------|
| WB | 1:1000-1:20000 |
| ICC/IF | 1:100-1:1000 |

Not tested in other applications.

Calculated MW 53 kDa. ([Note](#))

Properties

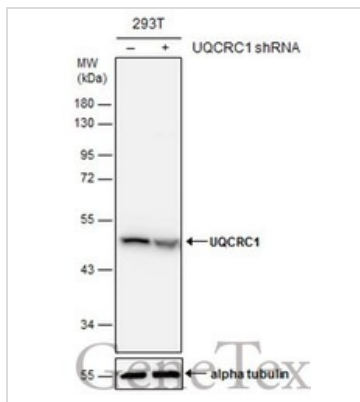
| | |
|---------------|--|
| Form | Liquid |
| Buffer | PBS, 20% Glycerol |
| Preservative | 0.01% Thimerosal |
| Storage | Store as concentrated solution. Centrifuge briefly prior to opening vial. For short-term storage (1-2 weeks), store at 4°C. For long-term storage, aliquot and store at -20°C or below. Avoid multiple freeze-thaw cycles. |
| Concentration | 1 mg/ml (Please refer to the vial label for the specific concentration.) |
| Immunogen | Recombinant protein encompassing a sequence within the center region of human UQCRC1. The exact sequence is proprietary. |
| Purification | Purified by antigen-affinity chromatography. |
| Conjugation | Unconjugated |

Note

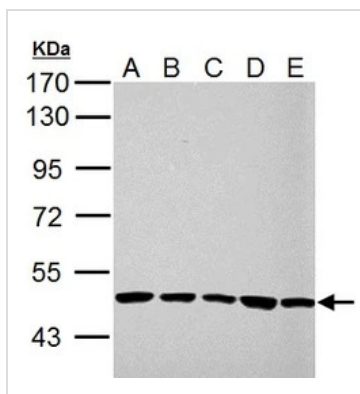
For laboratory research use only. Not for any clinical, therapeutic, or diagnostic use in humans or animals. Not for animal or human consumption.

Purchasers shall not, and agree not to enable third parties to, analyze, copy, reverse engineer or otherwise attempt to determine the structure or sequence of the product.

For full product information, images and publications, please visit our [website](#).

DATA IMAGES

GTx101896 WB Image

Non-transfected (–) and transfected (+) 293T whole cell extracts (30 µg) were separated by 10% SDS-PAGE, and the membrane was blotted with UQCRC1 antibody (GTx101896) diluted at 1:5000. The HRP-conjugated anti-rabbit IgG antibody (GTx213110-01) was used to detect the primary antibody.


GTx101896 WB Image

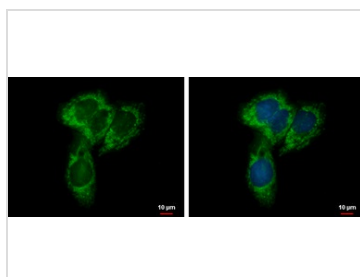
UQCRC1 antibody detects UQCRC1 protein by western blot analysis.

- A. 30 µg 293T whole cell lysate/extract
- B. 30 µg A431 whole cell lysate/extract
- C. 30 µg HeLa whole cell lysate/extract
- D. 30 µg HepG2 whole cell lysate/extract
- E. 30 µg A375 whole cell lysate/extract

10% SDS-PAGE

UQCRC1 antibody (GTx101896) dilution: 1:10000

The HRP-conjugated anti-rabbit IgG antibody (GTx213110-01) was used to detect the primary antibody.

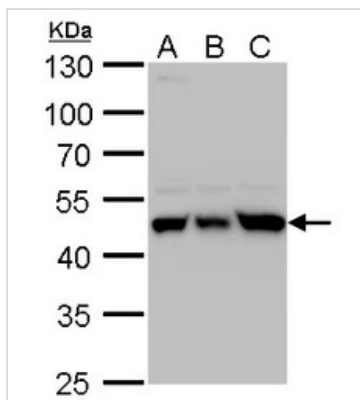

GTx101896 ICC/IF Image

NYREN18 antibody [N1N3] detects NYREN18 protein at mitochondria by immunofluorescent analysis.

Sample: HepG2 cells were fixed in 2% paraformaldehyde/culture medium at 37°C for 30 min.

Green: NYREN18 protein stained by NYREN18 antibody [N1N3] (GTx101896) diluted at 1:500.

Blue: Hoechst 33342 staining.


GTx101896 WB Image

UQCRC1 antibody detects UQCRC1 protein by western blot analysis.

- A Huh7 whole cell lysate/extract
- B Hep3B whole cell lysate/extract
- C HepG2 whole cell lysate/extract

10% SDS-PAGE

UQCRC1 antibody (GTx101896) dilution: 1:5000

The HRP-conjugated anti-rabbit IgG antibody (GTx213110-01) was used to detect the primary antibody.



For full product information, images and publications, please visit our [website](http://www.genetex.com).