

Pro-MBP / htPAPP-A antibody [5H9]

Cat. No. GTX10191

Host	Mouse
Clonality	Monoclonal
Isotype	IgG2b
Application	WB, IP, ELISA
Reactivity	Human

Package
100 µg

APPLICATION

Application Note

*Optimal dilutions/concentrations should be determined by the researcher.

Suggested dilution	Recommended dilution
WB	Assay dependent
IP	Assay dependent
ELISA	Assay dependent

Not tested in other applications.

Calculated MW 181 kDa. ([Note](#))

Product Note

This antibody is specific to proMBP subunit of the heterotetrameric complex of PAPP-A (htPAPP-A, consisting of PAPP-A subunits and proMBP subunits). It can be used to detect htPAPP-A when paired with another antibody which is specific for PAPP-A subunit.

PROPERTIES

Form	Liquid
Buffer	PBS
Preservative	0.09% Sodium azide
Storage	Store as concentrated solution. Centrifuge briefly prior to opening vial. Store at 4°C.
Concentration	Batch dependent (Please refer to the vial label for the specific concentration.)
Immunogen	Purified human PAPP-A/proMBP (heterotetrameric PAPP-A, htPAPP-A) complex.
Purification	Protein A purified
Conjugation	Unconjugated



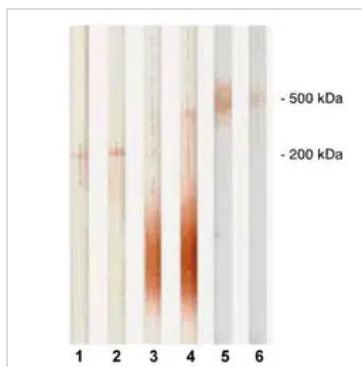
For full product information, images and publications, please visit our [website](#).

For laboratory research use only. Not for any clinical, therapeutic, or diagnostic use in humans or animals. Not for animal or human consumption.

Note

Purchasers shall not, and agree not to enable third parties to, analyze, copy, reverse engineer or otherwise attempt to determine the structure or sequence of the product.

DATA IMAGES



GTX10191 WB Image

Detection of human PAPP-A and proMBP subunits of htPAPP-A by monoclonal antibodies in Western blot. Lane 1: PAPP A antibody [18A10] (GTX10196); Lane 2: PAPP A antibody [3C8] (GTX10194); Lane 3: PAPP A antibody [5H9] (GTX10191); Lane 4: PAPP A antibody [11E4] (GTX14597); Lane 5: PAPP A antibody [10A5] (GTX10193); Lane 6: PAPP A antibody [3C8] (GTX10194); Lanes 1-4: reducing conditions; Lanes 5-6: non-reducing conditions, heterotetrameric complex was detected by PAPP A antibody [10A5] (GTX10193) and PAPP A antibody [3C8] (GTX10194)



For full product information, images and publications, please visit our [website](https://www.genetex.com).