

# PAPP A antibody [3C8]

**Cat. No. GTX10194**

<b>Host</b>	Mouse
<b>Clonality</b>	Monoclonal
<b>Isotype</b>	IgG2a
<b>Applications</b>	WB, IP, ELISA
<b>Reactivity</b>	Human

**Package**  
100 µg

## Applications

### Application Note

\*Optimal dilutions/concentrations should be determined by the researcher.

Suggested dilution	Recommended dilution
WB	Assay dependent
IP	Assay dependent
ELISA	Assay dependent

Not tested in other applications.

**Calculated MW** 181 kDa. ([Note](#))

### Product Note

This antibody is specific to PAPP A subunit of the heterotetrameric complex of PAPP-A (htPAPP-A). It can be used to detect htPAPP-A (when paired with another antibody specific for proMBP) or PAPP-A dimer (when paired with another antibody specific for PAPP A subunit)

## Properties

<b>Form</b>	Liquid
<b>Buffer</b>	PBS
<b>Preservative</b>	0.09% Sodium azide
<b>Storage</b>	Store as concentrated solution. Centrifuge briefly prior to opening vial. Store at 4°C.
<b>Concentration</b>	Batch dependent (Please refer to the vial label for the specific concentration.)
<b>Immunogen</b>	Purified human PAPP-A/proMBP (heterotetrameric PAPP-A, htPAPP-A) complex.
<b>Purification</b>	Protein A purified
<b>Conjugation</b>	Unconjugated

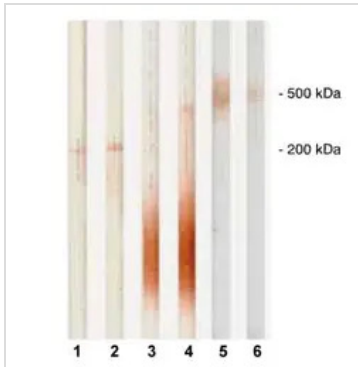


For full product information, images and publications, please visit our [website](#).

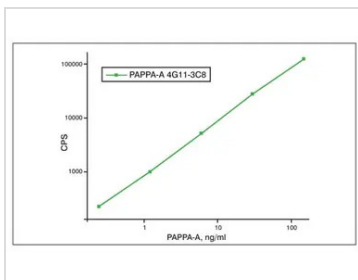
For laboratory research use only. Not for any clinical, therapeutic, or diagnostic use in humans or animals. Not for animal or human consumption.

**Note**

Purchasers shall not, and agree not to enable third parties to, analyze, copy, reverse engineer or otherwise attempt to determine the structure or sequence of the product.

**DATA IMAGES**

**GTX10194 WB Image**

Detection of human PAPP-A and proMBP subunits of htPAPP-A by monoclonal antibodies in Western blot. Lane 1: PAPP A antibody [18A10] (GTX10196); Lane 2: PAPP A antibody [3C8] (GTX10194); Lane 3: PAPP A antibody [5H9] (GTX10191); Lane 4: PAPP A antibody [11E4] (GTX14597); Lane 5: PAPP A antibody [10A5] (GTX10193); Lane 6: PAPP A antibody [3C8] (GTX10194); Lanes 1-4: reducing conditions; Lanes 5-6: non-reducing conditions, heterotetrameric complex was detected by PAPP A antibody [10A5] (GTX10193) and PAPP A antibody [3C8] (GTX10194)


**GTX10194 ELISA Image**

Calibration curve for PAPP-A sandwich immunoassay. Capture: PAPP A antibody [4G11] (GTX10192) biotinylated; Detection: PAPP A antibody [3C8] (GTX10194) labeled with stable Eu3+ -chelate; Antigen: htPAPP-A; Mixture of antibodies and antigen was incubated for 30 minutes at room temperature in streptavidin-coated plates.



For full product information, images and publications, please visit our [website](https://www.genetex.com).