

PHGDH antibody [N3C2], Internal

Cat. No. GTX101949

Host	Rabbit
Clonality	Polyclonal
Isotype	IgG
Application	WB, IHC-P, IHC-Fr
Reactivity	Human, Rat

Package
100 µl, 25 µl

APPLICATION

Application Note

*Optimal dilutions/concentrations should be determined by the researcher.

Suggested dilution	Recommended dilution
WB	1:500-1:20000
IHC-P	1:100-1:1000
IHC-Fr	1:100-1:1000

Not tested in other applications.

Calculated MW 57 kDa. ([Note](#))

PROPERTIES

Form	Liquid
Buffer	PBS, 1% BSA, 20% Glycerol
Preservative	0.01% Thimerosal
Storage	Store as concentrated solution. Centrifuge briefly prior to opening vial. For short-term storage (1-2 weeks), store at 4°C. For long-term storage, aliquot and store at -20°C or below. Avoid multiple freeze-thaw cycles.
Concentration	1 mg/ml (Please refer to the vial label for the specific concentration.)
Immunogen	Recombinant protein encompassing a sequence within the center region of human PHGDH. The exact sequence is proprietary.
Purification	Purified by antigen-affinity chromatography.
Conjugation	Unconjugated

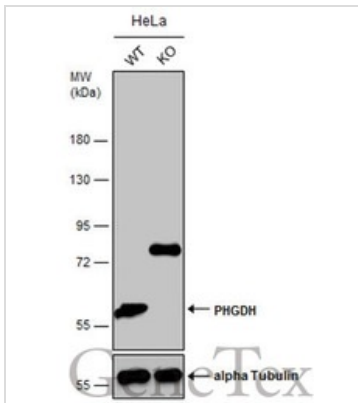
Note For laboratory research use only. Not for any clinical, therapeutic, or diagnostic use in humans or animals. Not for animal or human consumption.

Purchasers shall not, and agree not to enable third parties to, analyze, copy, reverse engineer or otherwise attempt to determine the structure or sequence of the product.



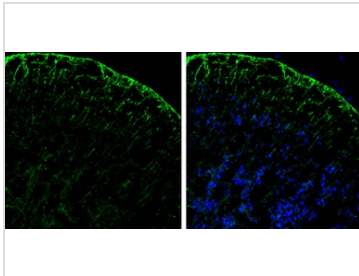
For full product information, images and publications, please visit our [website](#).

DATA IMAGES



GTXT101949 WB Image

Wild-type (WT) and PHGDH knockout (KO) HeLa cell extracts (30 µg) were separated by 7.5% SDS-PAGE, and the membrane was blotted with PHGDH antibody [N3C2], Internal (GTXT101949) diluted at 1:1000. The HRP-conjugated anti-rabbit IgG antibody (GTXT213110-01) was used to detect the primary antibody.



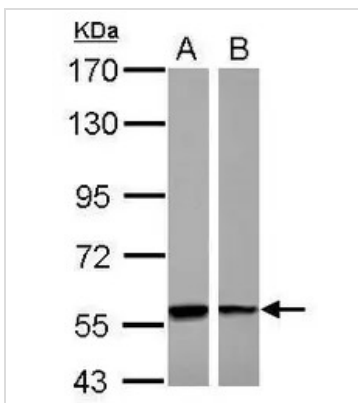
GTXT101949 IHC-Fr Image

PHGDH antibody [N3C2], Internal detects PHGDH protein by immunohistochemical analysis.

Sample: Frozen-sectioned rat E13.5 brain.

Green: PHGDH stained by PHGDH antibody [N3C2], Internal (GTXT101949) diluted at 1:250.

Blue: Fluoroshield with DAPI (GTXT30920).



GTXT101949 WB Image

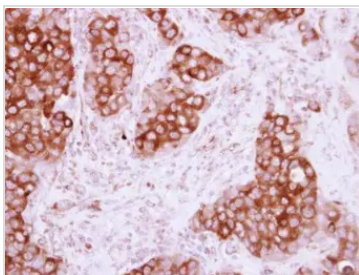
Sample (30 ug of whole cell lysate)

A: A431

B: Raji

7.5% SDS PAGE

GTXT101949 diluted at 1:10000



GTXT101949 IHC-P Image

Immunohistochemical analysis of paraffin-embedded human breast cancer, using PHGDH(GTXT101949) antibody at 1:250 dilution.



For full product information, images and publications, please visit our [website](https://www.genetex.com).