

PAPP A antibody [10H9]

Cat. No. GTX10195

Host	Mouse
Clonality	Monoclonal
Isotype	IgG2a
Applications	IP, ELISA
Reactivity	Human

Package
100 µg

Applications

Application Note

*Optimal dilutions/concentrations should be determined by the researcher.

Suggested dilution	Recommended dilution
IP	Assay dependent
ELISA	Assay dependent

Not tested in other applications.

Product Note

This antibody is specific to PAPP A subunit of the heterotetrameric complex of PAPP-A (htPAPP-A). It can be used to detect htPAPP-A (when paired with another antibody specific for proMBP) or PAPP-A dimer (when paired with another antibody specific for PAPP A subunit)

Properties

Form	Liquid
Buffer	PBS
Preservative	0.09% Sodium azide
Storage	Store as concentrated solution. Centrifuge briefly prior to opening vial. Store at 4°C.
Concentration	Batch dependent (Please refer to the vial label for the specific concentration.)
Immunogen	Purified human PAPP-A/proMBP (heterotetrameric PAPP-A, htPAPP-A) complex.
Purification	Protein A purified
Conjugation	Unconjugated

Note

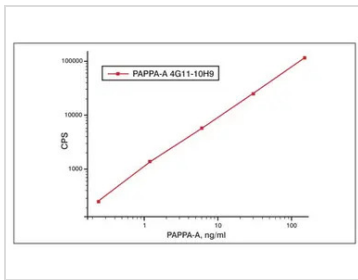
For laboratory research use only. Not for any clinical, therapeutic, or diagnostic use in humans or animals. Not for animal or human consumption.

Purchasers shall not, and agree not to enable third parties to, analyze, copy, reverse engineer or otherwise attempt to determine the structure or sequence of the product.



For full product information, images and publications, please visit our [website](#).

DATA IMAGES



GTX10195 ELISA Image

Calibration curve for PAPP-A sandwich immunoassay. Capture: PAPP A antibody [4G11] (GTX10192) biotinylated; Detection: PAPP A antibody [10H9] (GTX10195) labeled with stable Eu3+ -chelate; Antigen: htPAPP-A; Mixture of antibodies and antigen was incubated for 30 minutes at room temperature in streptavidin-coated plates.



For full product information, images and publications, please visit our [website](#).