

## S100 antibody [6G1]

## Cat. No. GTX10203

<b>Host</b>	Mouse
<b>Clonality</b>	Monoclonal
<b>Isotype</b>	IgG1
<b>Applications</b>	WB, ELISA, Immunoassay, Purification
<b>Reactivity</b>	Human

Package  
100 µg

## Applications

## Application Note

\*Optimal dilutions/concentrations should be determined by the researcher.

Suggested dilution	Recommended dilution
WB	Assay dependent
ELISA	Assay dependent
Immunoassay	Assay dependent
Purification	Assay dependent

Not tested in other applications.

**Product Note** Specific to S100BB and S100A1B.

## Properties

<b>Form</b>	Liquid
<b>Buffer</b>	PBS
<b>Preservative</b>	0.1% Sodium azide
<b>Storage</b>	Store as concentrated solution. Centrifuge briefly prior to opening vial. Store at 4°C.
<b>Concentration</b>	Batch dependent (Please refer to the vial label for the specific concentration.)
<b>Immunogen</b>	Human S-100 protein
<b>Purification</b>	Protein A purified
<b>Conjugation</b>	Unconjugated

## Note

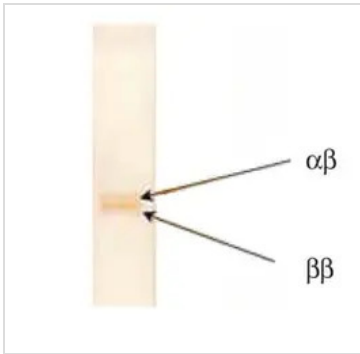
For laboratory research use only. Not for any clinical, therapeutic, or diagnostic use in humans or animals. Not for animal or human consumption.

Purchasers shall not, and agree not to enable third parties to, analyze, copy, reverse engineer or otherwise attempt to determine the structure or sequence of the product.



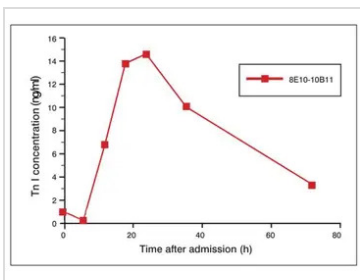
For full product information, images and publications, please visit our [website](#).

DATA IMAGES



**GTX10203 WB Image**

Interaction of S100 antibody [6G1] (GTX10203) with S100 protein from human brain in Western blotting (after native gel electrophoresis by Ornstein-Davis). Antigen loaded: 1  $\mu$ g



**GTX10203 ELISA Image**

Cardiac troponin I measurements using sandwich immunoassays to determine the total cardiac troponin I in serial blood samples from AMI patient.



For full product information, images and publications, please visit our [website](#).