

# MYST2 antibody [N2C1], Internal

**Cat. No. GTX102041**

|                     |              |
|---------------------|--------------|
| <b>Host</b>         | Rabbit       |
| <b>Clonality</b>    | Polyclonal   |
| <b>Isotype</b>      | IgG          |
| <b>Applications</b> | WB, IHC-P    |
| <b>Reactivity</b>   | Human, Mouse |

References ( 2 )

Package

100 µl, 25 µl

## Applications

### Application Note

\*Optimal dilutions/concentrations should be determined by the researcher.

| Suggested dilution | Recommended dilution |
|--------------------|----------------------|
| WB                 | 1:500-1:3000         |
| IHC-P              | 1:100-1:1000         |

Not tested in other applications.

**Calculated MW** 71 kDa. ( [Note](#) )

**Product Note** KO/KD validation is based on published data (PMID: 26625199).

## Properties

|                      |  |
|----------------------|--|
| <b>Form</b>          | Liquid   |
| <b>Buffer</b>        | PBS, 1% BSA, 20% Glycerol  |
| <b>Preservative</b>  | 0.01% Thimerosal   |
| <b>Storage</b>       | Store as concentrated solution. Centrifuge briefly prior to opening vial. For short-term storage (1-2 weeks), store at 4°C. For long-term storage, aliquot and store at -20°C or below. Avoid multiple freeze-thaw cycles. |
| <b>Concentration</b> | 0.33 mg/ml (Please refer to the vial label for the specific concentration.)  |
| <b>Immunogen</b>     | Recombinant protein encompassing a sequence within the center region of human MYST2. The exact sequence is proprietary.  |
| <b>Purification</b>  | Purified by antigen-affinity chromatography.   |
| <b>Conjugation</b>   | Unconjugated   |

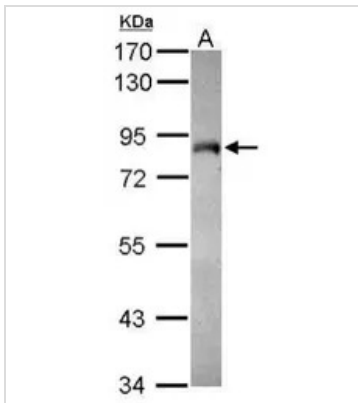
### Note

For laboratory research use only. Not for any clinical, therapeutic, or diagnostic use in humans or animals. Not for animal or human consumption.

Purchasers shall not, and agree not to enable third parties to, analyze, copy, reverse engineer or otherwise attempt to determine the structure or sequence of the product.



For full product information, images and publications, please visit our [website](#).

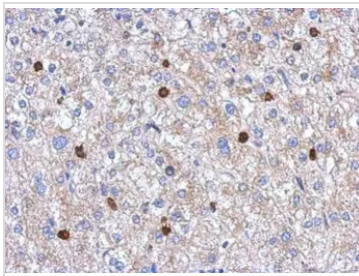
**DATA IMAGES**

**GTX102041 WB Image**

Sample (30 ug of whole cell lysate)

A: MCF-7

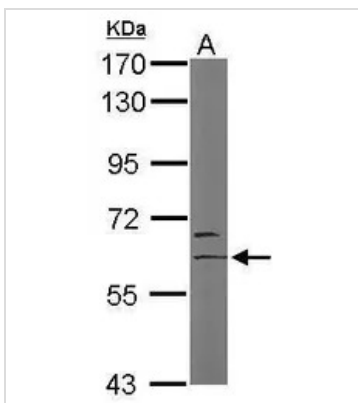
7.5% SDS PAGE

GTX102041 diluted at 1:1000


**GTX102041 IHC-P Image**

Immunohistochemical analysis of paraffin-embedded human hepatoma, using MYST2(GTX102041) antibody at 1:250 dilution.

Antigen Retrieval: Trilogy™ (EDTA based, pH 8.0) buffer, 15min

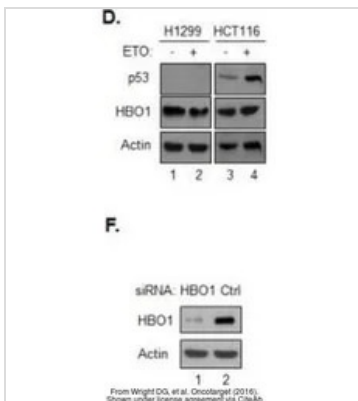

**GTX102041 WB Image**

Sample (50 ug of whole cell lysate)

A: Mouse brain

7.5% SDS PAGE

GTX102041 diluted at 1:1000


**GTX102041 WB Image**

The data was published in the journal Oncotarget in 2016. [PMID: 26625199](https://pubmed.ncbi.nlm.nih.gov/26625199/)



For full product information, images and publications, please visit our [website](https://www.genetex.com).