

COBRA1 antibody

Cat. No. GTX102043

| | |
|---------------------|-------------------|
| Host | Rabbit |
| Clonality | Polyclonal |
| Isotype | IgG |
| Applications | WB, ICC/IF, IHC-P |
| Reactivity | Human, Mouse |

Package
100 µl, 25 µl

Applications

Application Note

*Optimal dilutions/concentrations should be determined by the researcher.

| Suggested dilution | Recommended dilution |
|--------------------|----------------------|
| WB | 1:500-1:3000 |
| ICC/IF | 1:100-1:1000 |
| IHC-P | 1:100-1:1000 |

Not tested in other applications.

Calculated MW 66 kDa. ([Note](#))

Properties

| | |
|----------------------|--|
| Form | Liquid |
| Buffer | PBS, 40% Glycerol |
| Preservative | 0.01% Thimerosal |
| Storage | Store as concentrated solution. Centrifuge briefly prior to opening vial. For short-term storage (1-2 weeks), store at 4°C. For long-term storage, aliquot and store at -20°C or below. Avoid multiple freeze-thaw cycles. |
| Concentration | 1 mg/ml (Please refer to the vial label for the specific concentration.) |
| Immunogen | Recombinant protein encompassing a sequence within the center region of human COBRA1. The exact sequence is proprietary. |
| Purification | Purified by antigen-affinity chromatography. |
| Conjugation | Unconjugated |

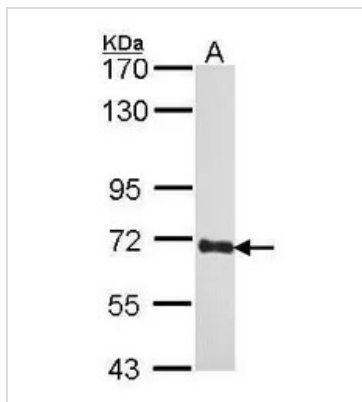
Note For laboratory research use only. Not for any clinical, therapeutic, or diagnostic use in humans or animals. Not for animal or human consumption.

Purchasers shall not, and agree not to enable third parties to, analyze, copy, reverse engineer or otherwise attempt to determine the structure or sequence of the product.



For full product information, images and publications, please visit our [website](#).

DATA IMAGES

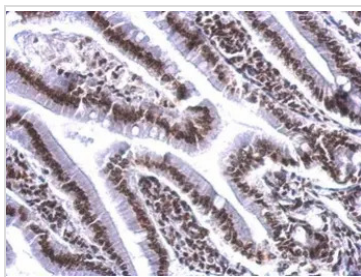
**GTX102043 WB Image**

Sample (30 ug of whole cell lysate)

A: H1299

5% SDS PAGE

GTX101827 diluted at 1:1000

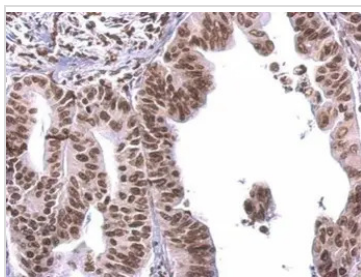
**GTX102043 IHC-P Image**

COBRA1 antibody detects COBRA1 protein at nucleus on mouse intestine by immunohistochemical analysis.

Sample: Paraffin-embedded mouse intestine.

COBRA1 antibody (GTX102043) dilution: 1:500.

Antigen Retrieval: Trilogy™ (EDTA based, pH 8.0) buffer, 15min

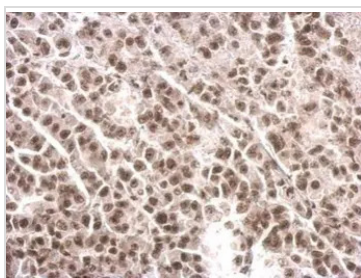
**GTX102043 IHC-P Image**

COBRA1 antibody detects COBRA1 protein at nucleus on human gastric cancer by immunohistochemical analysis.

Sample: Paraffin-embedded gastric cancer.

COBRA1 antibody (GTX102043) dilution: 1:500.

Antigen Retrieval: Trilogy™ (EDTA based, pH 8.0) buffer, 15min

**GTX102043 IHC-P Image**

COBRA1 antibody detects COBRA1 protein at nucleus on HBL435 xenograft by immunohistochemical analysis.

Sample: Paraffin-embedded HBL435 xenograft.

COBRA1 antibody (GTX102043) dilution: 1:500.

Antigen Retrieval: Trilogy™ (EDTA based, pH 8.0) buffer, 15min



For full product information, images and publications, please visit our [website](#).