

## Transaldolase antibody

Cat. No. GTX102076

Host	Rabbit
Clonality	Polyclonal
Isotype	IgG
Applications	WB, IHC-P
Reactivity	Human, Mouse

References ( 2 )

Package

100 µl, 25 µl

## Applications

## Application Note

\*Optimal dilutions/concentrations should be determined by the researcher.

Suggested dilution	Recommended dilution
WB	1:500-1:3000
IHC-P	1:100-1:1000

Not tested in other applications.

Calculated MW 38 kDa. ( [Note](#) )

## Properties

Form	Liquid
Buffer	0.1M Tris, 0.1M Glycine, 10% Glycerol
Preservative	0.01% Thimerosal
Storage	Store as concentrated solution. Centrifuge briefly prior to opening vial. For short-term storage (1-2 weeks), store at 4°C. For long-term storage, aliquot and store at -20°C or below. Avoid multiple freeze-thaw cycles.
Concentration	6.48 mg/ml (Please refer to the vial label for the specific concentration.)
Immunogen	Recombinant protein encompassing a sequence within the N-terminus region of human Transaldolase. The exact sequence is proprietary.
Purification	Affinity purified by Protein A.
Conjugation	Unconjugated

## Note

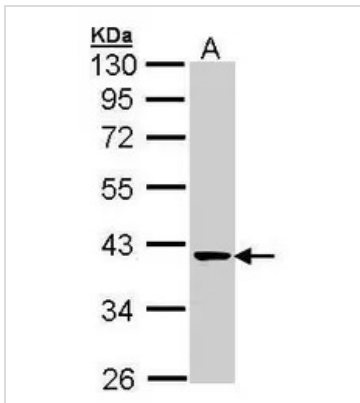
For laboratory research use only. Not for any clinical, therapeutic, or diagnostic use in humans or animals. Not for animal or human consumption.

Purchasers shall not, and agree not to enable third parties to, analyze, copy, reverse engineer or otherwise attempt to determine the structure or sequence of the product.



For full product information, images and publications, please visit our [website](#).

DATA IMAGES



**GTX102076 WB Image**

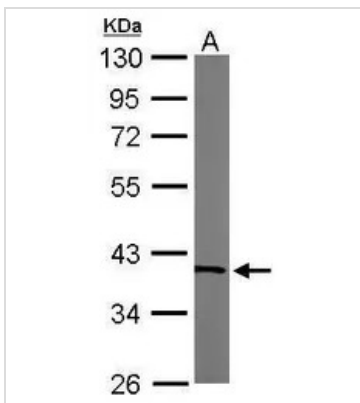
Sample (30 µg of whole cell lysate)

A: A431 (GTX27909)

10% SDS PAGE

GTX102076 diluted at 1:1000

The HRP-conjugated anti-rabbit IgG antibody (GTX213110-01) was used to detect the primary antibody.



**GTX102076 WB Image**

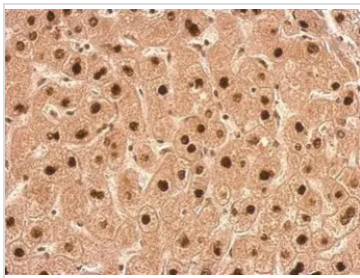
Sample (50 µg of whole cell lysate)

A: Mouse brain

10% SDS PAGE

GTX102076 diluted at 1:1000

The HRP-conjugated anti-rabbit IgG antibody (GTX213110-01) was used to detect the primary antibody.



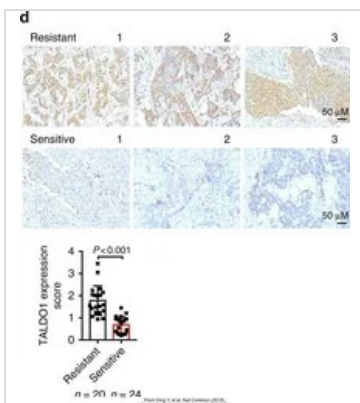
**GTX102076 IHC-P Image**

Transaldolase antibody detects TALDO1 protein at nucleus on human hepatoma by immunohistochemical analysis.

Sample: Paraffin-embedded hepatoma.

Transaldolase antibody (GTX102076) dilution: 1:500.

Antigen Retrieval: Trilogy™ (EDTA based, pH 8.0) buffer, 15min



**GTX102076 IHC-P Image**

The data was published in the journal Nat Commun in 2018. [PMID: 30323337](https://pubmed.ncbi.nlm.nih.gov/30323337/)



For full product information, images and publications, please visit our [website](https://www.genetex.com).