

# CIZ1 antibody [N2C1], Internal

**Cat. No. GTX102144**

<b>Host</b>	Rabbit
<b>Clonality</b>	Polyclonal
<b>Isotype</b>	IgG
<b>Applications</b>	WB, ICC/IF, IHC-P, IP
<b>Reactivity</b>	Human

**Package**  
100 µl, 25 µl

## Applications

### Application Note

\*Optimal dilutions/concentrations should be determined by the researcher.

Suggested dilution	Recommended dilution
WB	1:500-1:3000
ICC/IF	1:100-1:1000
IHC-P	1:100-1:1000
IP	1:100-1:500

Not tested in other applications.

**Calculated MW** 100 kDa. ([Note](#))

## Properties

<b>Form</b>	Liquid
<b>Buffer</b>	PBS, 1% BSA, 20% Glycerol
<b>Preservative</b>	0.01% Thimerosal
<b>Storage</b>	Store as concentrated solution. Centrifuge briefly prior to opening vial. For short-term storage (1-2 weeks), store at 4°C. For long-term storage, aliquot and store at -20°C or below. Avoid multiple freeze-thaw cycles.
<b>Concentration</b>	1 mg/ml (Please refer to the vial label for the specific concentration.)
<b>Immunogen</b>	Recombinant protein encompassing a sequence within the center region of human CIZ1. The exact sequence is proprietary.
<b>Purification</b>	Purified by antigen-affinity chromatography.
<b>Conjugation</b>	Unconjugated

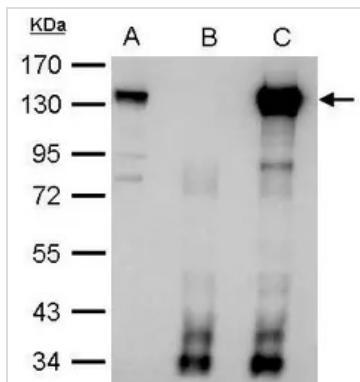
### Note

For laboratory research use only. Not for any clinical, therapeutic, or diagnostic use in humans or animals. Not for animal or human consumption.

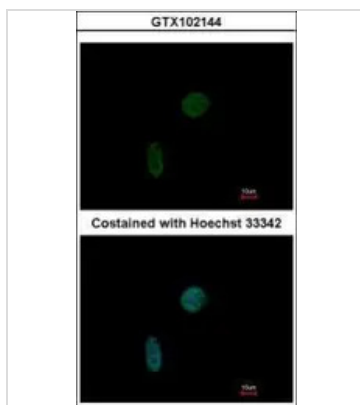
Purchasers shall not, and agree not to enable third parties to, analyze, copy, reverse engineer or otherwise attempt to determine the structure or sequence of the product.



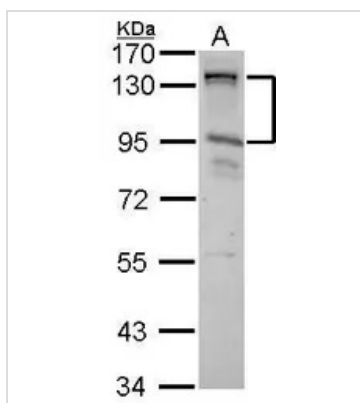
For full product information, images and publications, please visit our [website](#).

**DATA IMAGES**

**GTX102144 IP Image**

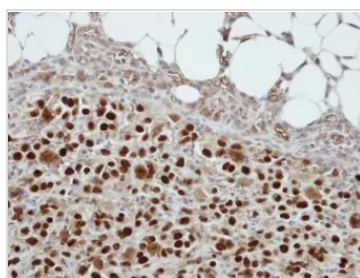
CIZ1 antibody immunoprecipitates CIZ1 protein in IP experiments. IP Sample: 1000 µg HeLa whole cell lysate/extract A. 40 µg HeLa whole cell lysate/extract B. Control with 2.5 µg of preimmune rabbit IgG C. Immunoprecipitation of CIZ1 protein by 2.5 µg of CIZ1 antibody (GTX102144) 7.5% SDS-PAGE The immunoprecipitated CIZ1 protein was detected by CIZ1 antibody (GTX102144) diluted at 1:1000. EasyBlot anti-rabbit IgG (GTX221666-01) was used as a secondary reagent.


**GTX102144 ICC/IF Image**

Immunofluorescence analysis of paraformaldehyde-fixed HeLa, using CIZ1(GTX102144) antibody at 1:200 dilution.


**GTX102144 WB Image**

CIZ1 antibody [N2C1], Internal detects CIZ1 protein by Western blot analysis.  
A. 30 µg HeLa whole cell lysate/extract  
7.5 % SDS-PAGE  
CIZ1 antibody [N2C1], Internal (GTX102144) dilution: 1:1000


**GTX102144 IHC-P Image**

Immunohistochemical analysis of paraffin-embedded ES2 xenograft, using CIZ1(GTX102144) antibody at 1:500 dilution.  
Antigen Retrieval: Citrate buffer, pH 6.0, 15 min



For full product information, images and publications, please visit our [website](https://www.genetex.com).