

UQCRFS1 antibody [N1C3]

Cat. No. GTX102150

Host	Rabbit
Clonality	Polyclonal
Isotype	IgG
Applications	WB, ICC/IF
Reactivity	Human, Mouse

References (4)

Package

100 µl, 25 µl

Applications

Application Note

*Optimal dilutions/concentrations should be determined by the researcher.

Suggested dilution	Recommended dilution
WB	1:500-1:3000
ICC/IF	1:100-1:1000

Not tested in other applications.

Calculated MW 30 kDa. ([Note](#))

Properties

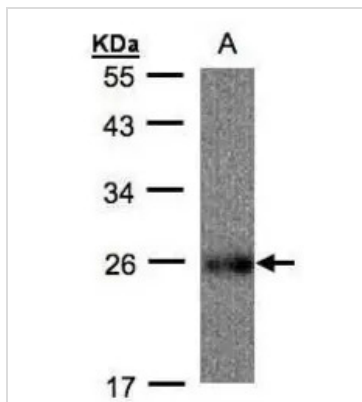
Form	Liquid
Buffer	0.1M Tris, 0.1M Glycine, 10% Glycerol
Preservative	0.01% Thimerosal
Storage	Store as concentrated solution. Centrifuge briefly prior to opening vial. For short-term storage (1-2 weeks), store at 4°C. For long-term storage, aliquot and store at -20°C or below. Avoid multiple freeze-thaw cycles.
Concentration	0.32 mg/ml (Please refer to the vial label for the specific concentration.)
Immunogen	Recombinant protein encompassing a sequence within the center region of human UQCRFS1. The exact sequence is proprietary.
Purification	Purified by antigen-affinity chromatography.
Conjugation	Unconjugated

Note

For laboratory research use only. Not for any clinical, therapeutic, or diagnostic use in humans or animals. Not for animal or human consumption.

Purchasers shall not, and agree not to enable third parties to, analyze, copy, reverse engineer or otherwise attempt to determine the structure or sequence of the product.

For full product information, images and publications, please visit our [website](#).

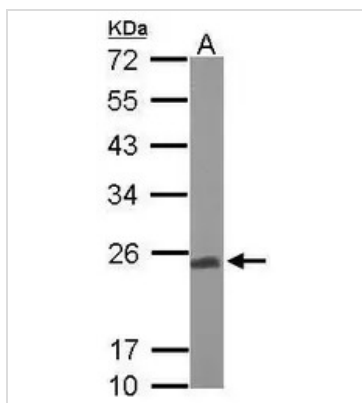
DATA IMAGES

GTX102150 WB Image

Sample(30 ug whole cell lysate)

A: Raji(GTX27908)

12% SDS PAGE

GTX102150 diluted at 1:500

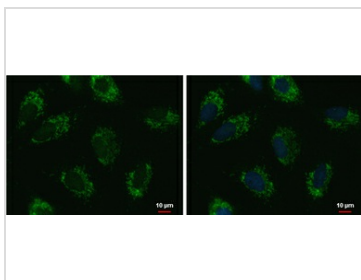

GTX102150 WB Image

Sample (50 ug of whole cell lysate)

A: Mouse brain

12% SDS PAGE

GTX102150 diluted at 1:1000


GTX102150 ICC/IF Image

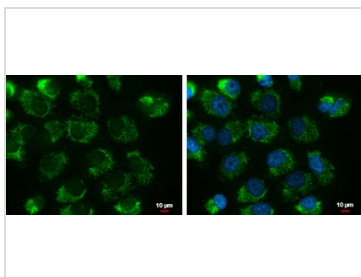
UQCERS1 antibody [N1C3] detects UQCERS1 protein at mitochondria by immunofluorescent analysis.

Sample: A549 cells were fixed in 2% paraformaldehyde/culture medium at 37°C for 30 min.

Green: UQCERS1 protein stained by UQCERS1 antibody [N1C3] (GTX102150) diluted at 1:500.

Blue: Hoechst 33342 staining.

Scale bar = 10 μm.


GTX102150 ICC/IF Image

UQCERS1 antibody [N1C3] detects UQCERS1 protein at mitochondria by immunofluorescent analysis.

Sample: H1299 cells were fixed in 2% paraformaldehyde/culture medium at 37°C for 30 min.

Green: UQCERS1 protein stained by UQCERS1 antibody [N1C3] (GTX102150) diluted at 1:500.

Blue: Hoechst 33342 staining.



For full product information, images and publications, please visit our [website](https://www.genetex.com).