

APOBEC3C antibody

Cat. No. GTX102164

Host	Rabbit
Clonality	Polyclonal
Isotype	IgG
Application	WB, IP
Reactivity	Human

Reference (7)

★★★★☆ Review (1)

Package

100 µl, 25 µl

APPLICATION

Application Note

*Optimal dilutions/concentrations should be determined by the researcher.

Suggested dilution	Recommended dilution
WB	1:500-1:3000
IP	Assay dependent

Not tested in other applications.

Calculated MW 23 kDa. ([Note](#))

Product Note Knockdown/Knockout validation was supported by references (PMID: 31448067)

PROPERTIES

Form	Liquid
Buffer	PBS, 20% Glycerol
Preservative	0.01% Thimerosal
Storage	Store as concentrated solution. Centrifuge briefly prior to opening vial. For short-term storage (1-2 weeks), store at 4°C. For long-term storage, aliquot and store at -20°C or below. Avoid multiple freeze-thaw cycles.
Concentration	1 mg/ml (Please refer to the vial label for the specific concentration.)
Immunogen	Recombinant protein encompassing a sequence within the center region of human APOBEC3C. The exact sequence is proprietary.
Purification	Purified by antigen-affinity chromatography.
Conjugation	Unconjugated

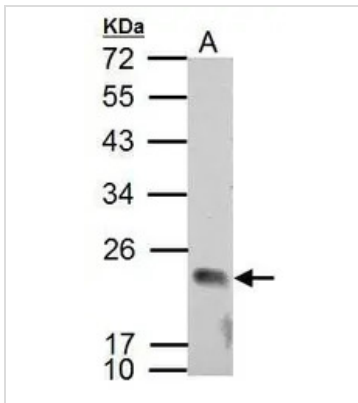
Note

For laboratory research use only. Not for any clinical, therapeutic, or diagnostic use in humans or animals. Not for animal or human consumption.

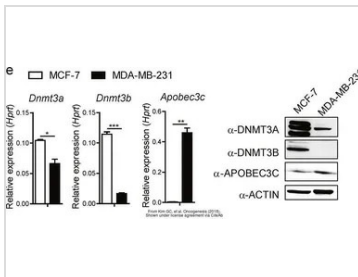
Purchasers shall not, and agree not to enable third parties to, analyze, copy, reverse engineer or otherwise attempt to determine the structure or sequence of the product.



For full product information, images and publications, please visit our [website](#).

DATA IMAGES

GTX102164 WB Image

Sample (30 ug of whole cell lysate)
A: NCI-H929
12% SDS PAGE
GTX102164 diluted at 1:2000


GTX102164 WB Image

The data was published in the journal Oncogenesis in 2018. [PMID: 30467308](https://pubmed.ncbi.nlm.nih.gov/30467308/)



For full product information, images and publications, please visit our [website](https://www.genetex.com).