

PAF49 antibody

Cat. No. GTX102175

Host	Rabbit
Clonality	Polyclonal
Isotype	IgG
Applications	WB, ICC/IF, IHC-P
Reactivity	Human

References (1)

Package

100 µl, 25 µl

Applications

Application Note

*Optimal dilutions/concentrations should be determined by the researcher.

Suggested dilution	Recommended dilution
WB	1:500-1:3000
ICC/IF	1:100-1:1000
IHC-P	1:100-1:1000

Not tested in other applications.

Calculated MW 55 kDa. ([Note](#))

Properties

Form	Liquid
Buffer	PBS, 20% Glycerol
Preservative	0.025% ProClin 300
Storage	Store as concentrated solution. Centrifuge briefly prior to opening vial. For short-term storage (1-2 weeks), store at 4°C. For long-term storage, aliquot and store at -20°C or below. Avoid multiple freeze-thaw cycles.
Concentration	0.55 mg/ml (Please refer to the vial label for the specific concentration.)
Immunogen	Recombinant protein encompassing a sequence within the center region of human PAF49. The exact sequence is proprietary.
Purification	Purified by antigen-affinity chromatography.
Conjugation	Unconjugated

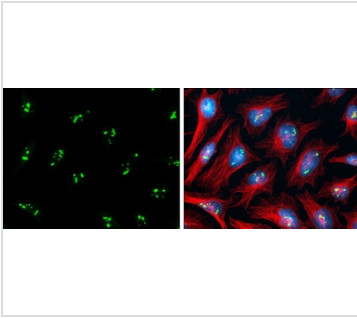
Note

For laboratory research use only. Not for any clinical, therapeutic, or diagnostic use in humans or animals. Not for animal or human consumption.

Purchasers shall not, and agree not to enable third parties to, analyze, copy, reverse engineer or otherwise attempt to determine the structure or sequence of the product.



For full product information, images and publications, please visit our [website](#).

DATA IMAGES

GTX102175 ICC/IF Image

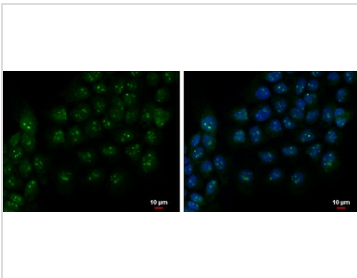
PAF49 antibody detects PAF49 protein at nucleolus by immunofluorescent analysis.

Sample: HeLa cells were fixed in ice-cold MeOH for 5 min.

Green: PAF49 protein stained by PAF49 antibody (GTX102175) diluted at 1:1000.

Red: alpha Tubulin, a cytoskeleton marker, stained by alpha Tubulin antibody [GT114] (GTX628802) diluted at 1:500.

Blue: Hoechst 33342 staining.


GTX102175 ICC/IF Image

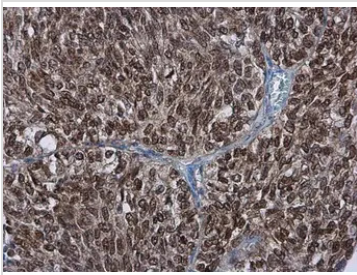
PAF49 antibody detects PAF49 protein at nucleolus by immunofluorescent analysis.

Sample: A431 cells were fixed in 4% paraformaldehyde at RT for 15 min.

Green: PAF49 protein stained by PAF49 antibody (GTX102175) diluted at 1:500.

Blue: Hoechst 33342 staining.

Scale bar = 10 μm.

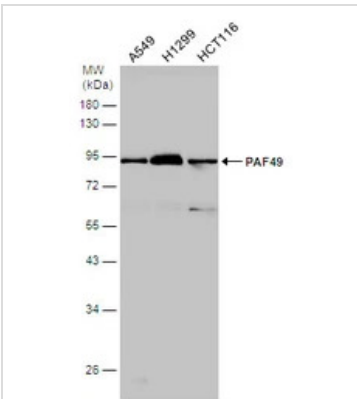

GTX102175 IHC-P Image

PAF49 antibody detects PAF49 protein at cytoplasm and nucleus in human ovarian cancer by immunohistochemical analysis.

Sample: Paraffin-embedded human ovarian cancer.

PAF49 antibody (GTX102175) diluted at 1:500.

Antigen Retrieval: Citrate buffer, pH 6.0, 15 min


GTX102175 WB Image

Various whole cell extracts (30 μg) were separated by 10% SDS-PAGE, and the membrane was blotted with PAF49 antibody (GTX102175) diluted at 1:1000.



For full product information, images and publications, please visit our [website](http://www.genetex.com).