

# MEK2 antibody

**Cat. No. GTX102186**

<b>Host</b>	Rabbit
<b>Clonality</b>	Polyclonal
<b>Isotype</b>	IgG
<b>Application</b>	WB, ICC/IF, IHC-P
<b>Reactivity</b>	Human

**Package**  
100 µl, 25 µl

## APPLICATION

### Application Note

\*Optimal dilutions/concentrations should be determined by the researcher.

Suggested dilution	Recommended dilution
WB	1:5000-1:25000
ICC/IF	1:100-1:1000
IHC-P	1:100-1:1000

Not tested in other applications.

**Calculated MW** 44 kDa. ( [Note](#) )

## PROPERTIES

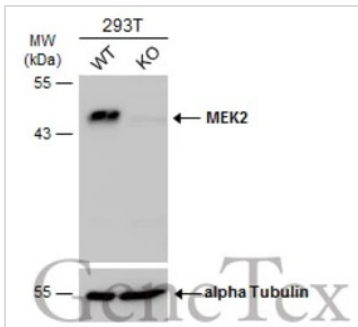
<b>Form</b>	Liquid
<b>Buffer</b>	PBS, 1% BSA, 20% Glycerol
<b>Preservative</b>	0.01% Thimerosal
<b>Storage</b>	Store as concentrated solution. Centrifuge briefly prior to opening vial. For short-term storage (1-2 weeks), store at 4°C. For long-term storage, aliquot and store at -20°C or below. Avoid multiple freeze-thaw cycles.
<b>Concentration</b>	0.97 mg/ml (Please refer to the vial label for the specific concentration.)
<b>Immunogen</b>	Recombinant protein encompassing a sequence within the center region of human MEK2. The exact sequence is proprietary.
<b>Purification</b>	Purified by antigen-affinity chromatography.
<b>Conjugation</b>	Unconjugated

**Note** For laboratory research use only. Not for any clinical, therapeutic, or diagnostic use in humans or animals. Not for animal or human consumption.

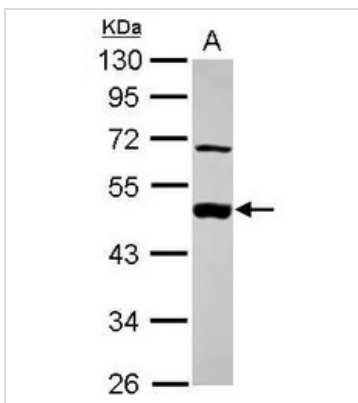
Purchasers shall not, and agree not to enable third parties to, analyze, copy, reverse engineer or otherwise attempt to determine the structure or sequence of the product.



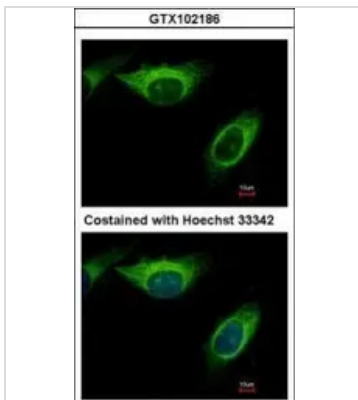
For full product information, images and publications, please visit our [website](#).

**DATA IMAGES**

**GTK102186 WB Image**

Wild-type (WT) and MEK2 knockout (KO) 293T cell extracts (30 µg) were separated by 10% SDS-PAGE, and the membrane was blotted with MEK2 antibody (GTK102186) diluted at 1:1000. The HRP-conjugated anti-rabbit IgG antibody (GTK213110-01) was used to detect the primary antibody.


**GTK102186 WB Image**

Sample (30 ug of whole cell lysate)  
A: A431 (GTK27909)  
10% SDS PAGE  
GTK102186 diluted at 1:1000


**GTK102186 ICC/IF Image**

Immunofluorescence analysis of methanol-fixed HeLa, using MEK2(GTK102186) antibody at 1:500 dilution.



For full product information, images and publications, please visit our [website](https://www.genetex.com).