

NDUFV1 antibody [N3C3]

Cat. No. GTX102209

Host	Rabbit
Clonality	Polyclonal
Isotype	IgG
Application	WB, IHC-P
Reactivity	Human, Mouse, Zebrafish

Reference (3)

Package

100 µl, 25 µl

APPLICATION

Application Note

*Optimal dilutions/concentrations should be determined by the researcher.

Suggested dilution	Recommended dilution
WB	1:500-1:3000
IHC-P	1:100-1:1000

Not tested in other applications.

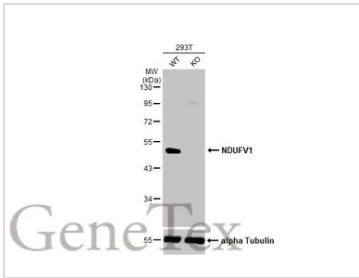
Calculated MW 51 kDa. ([Note](#))

PROPERTIES

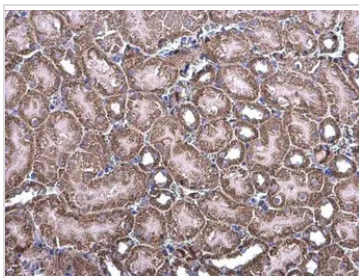
Form	Liquid
Buffer	PBS, 20% Glycerol
Preservative	0.025% ProClin 300
Storage	Store as concentrated solution. Centrifuge briefly prior to opening vial. For short-term storage (1-2 weeks), store at 4°C. For long-term storage, aliquot and store at -20°C or below. Avoid multiple freeze-thaw cycles.
Concentration	0.88 mg/ml (Please refer to the vial label for the specific concentration.)
Immunogen	Recombinant protein encompassing a sequence within the center region of human NDUFV1. The exact sequence is proprietary.
Purification	Purified by antigen-affinity chromatography.
Conjugation	Unconjugated
Note	<p>For laboratory research use only. Not for any clinical, therapeutic, or diagnostic use in humans or animals. Not for animal or human consumption.</p> <p>Purchasers shall not, and agree not to enable third parties to, analyze, copy, reverse engineer or otherwise attempt to determine the structure or sequence of the product.</p>



For full product information, images and publications, please visit our [website](#).

DATA IMAGES

GTX102209 WB Image

Wild-type (WT) and NDUFV1 knockout (KO) 293T cell extracts (30 µg) were separated by 10% SDS-PAGE, and the membrane was blotted with NDUFV1 antibody [N3C3] (GTX102209) diluted at 1:1000. The HRP-conjugated anti-rabbit IgG antibody (GTX213110-01) was used to detect the primary antibody.

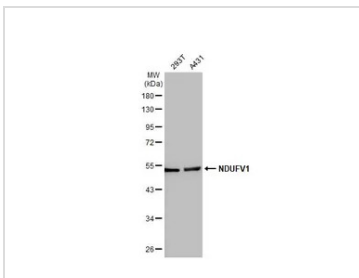

GTX102209 IHC-P Image

NDUFV1 antibody [N3C3] detects NDUFV1 protein at cytoplasm on mouse kidney by immunohistochemical analysis.

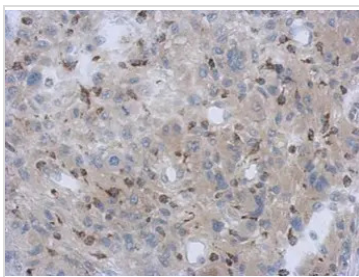
Sample: Paraffin-embedded mouse kidney.

NDUFV1 antibody [N3C3] (GTX102209) diluted at 1:500.

Antigen Retrieval: Trilogy™ (EDTA based, pH 8.0) buffer, 15min

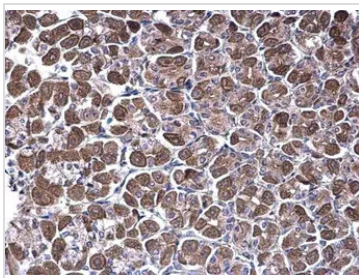

GTX102209 WB Image

Various whole cell extracts (30 µg) were separated by 10% SDS-PAGE, and the membrane was blotted with NDUFV1 antibody [N3C3] (GTX102209) diluted at 1:1000. The HRP-conjugated anti-rabbit IgG antibody (GTX213110-01) was used to detect the primary antibody.


GTX102209 IHC-P Image

Immunohistochemical analysis of paraffin-embedded U373 xenograft, using NDUFV1(GTX102209) antibody at 1:500 dilution.

Antigen Retrieval: Trilogy™ (EDTA based, pH 8.0) buffer, 15min


GTX102209 IHC-P Image

NDUFV1 antibody [N3C3] detects NDUFV1 protein at cytoplasm on mouse kidney by immunohistochemical analysis.

Sample: Paraffin-embedded mouse kidney.

NDUFV1 antibody [N3C3] (GTX102209) diluted at 1:500.

Antigen Retrieval: Trilogy™ (EDTA based, pH 8.0) buffer, 15min



For full product information, images and publications, please visit our [website](https://www.genetex.com).