

## SCAMP3 antibody [N1N3]

Cat. No. GTX102216

Host	Rabbit
Clonality	Polyclonal
Isotype	IgG
Applications	WB, ICC/IF, IHC-P
Reactivity	Human

References ( 4 )

Package

100 µl, 25 µl

## Applications

## Application Note

\*Optimal dilutions/concentrations should be determined by the researcher.

Suggested dilution	Recommended dilution
WB	1:500-1:3000
ICC/IF	1:100-1:1000
IHC-P	1:100-1:1000

Not tested in other applications.

Calculated MW	38 kDa. ( <a href="#">Note</a> )
Product Note	KO/KD validation is based on published data (PMID: 30754729).

## Properties

Form	Liquid
Buffer	0.1M Tris, 0.1M Glycine, 10% Glycerol
Preservative	0.01% Thimerosal
Storage	Store as concentrated solution. Centrifuge briefly prior to opening vial. For short-term storage (1-2 weeks), store at 4°C. For long-term storage, aliquot and store at -20°C or below. Avoid multiple freeze-thaw cycles.
Concentration	1 mg/ml (Please refer to the vial label for the specific concentration.)
Immunogen	Recombinant protein encompassing a sequence within the center region of human SCAMP3. The exact sequence is proprietary.
Purification	Purified by antigen-affinity chromatography.
Conjugation	Unconjugated

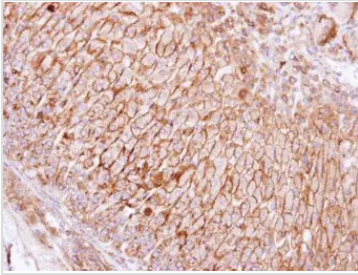


For full product information, images and publications, please visit our [website](#).

For laboratory research use only. Not for any clinical, therapeutic, or diagnostic use in humans or animals. Not for animal or human consumption.

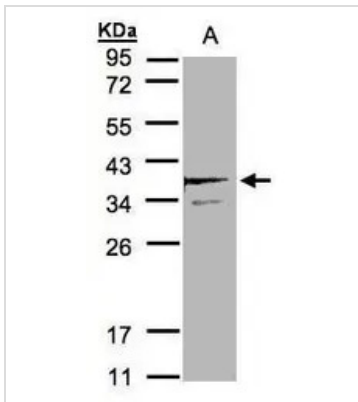
**Note**

Purchasers shall not, and agree not to enable third parties to, analyze, copy, reverse engineer or otherwise attempt to determine the structure or sequence of the product.

**DATA IMAGES**

**GTX102216 IHC-P Image**

Immunohistochemical analysis of paraffin-embedded human adrenal gland, using SCAMP3(GTX102216) antibody at 1:100 dilution.

Antigen Retrieval: Trilogy™ (EDTA based, pH 8.0) buffer, 15min


**GTX102216 WB Image**

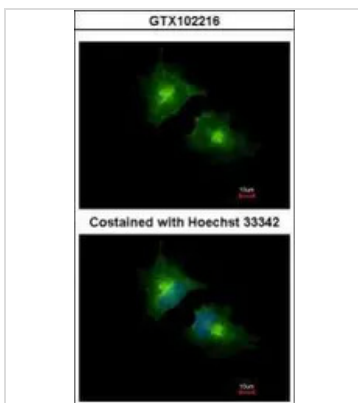
Sample(30 µg of whole cell lysate)

A:MOLT4(GTX27912)

12% SDS PAGE

GTX102216 diluted at 1:2000

The HRP-conjugated anti-rabbit IgG antibody (GTX213110-01) was used to detect the primary antibody.


**GTX102216 ICC/IF Image**

Immunofluorescence analysis of methanol-fixed HeLa, using SCAMP3(GTX102216) antibody at 1:1000 dilution.



For full product information, images and publications, please visit our [website](https://www.genetex.com).