

ARHGEF18 antibody

Cat. No. GTX102223

Host	Rabbit
Clonality	Polyclonal
Isotype	IgG
Applications	WB, ICC/IF, IHC-P
Reactivity	Human, Mouse, Rat

References (8)

Package

100 µl, 25 µl

Applications

Application Note

*Optimal dilutions/concentrations should be determined by the researcher.

Suggested dilution	Recommended dilution
WB	1:500-1:3000
ICC/IF	1:100-1:1000
IHC-P	1:100-1:1000

Not tested in other applications.

Calculated MW 131 kDa. ([Note](#))

Properties

Form	Liquid
Buffer	PBS, 1% BSA, 20% Glycerol
Preservative	0.01% Thimerosal
Storage	Store as concentrated solution. Centrifuge briefly prior to opening vial. For short-term storage (1-2 weeks), store at 4°C. For long-term storage, aliquot and store at -20°C or below. Avoid multiple freeze-thaw cycles.
Concentration	1 mg/ml (Please refer to the vial label for the specific concentration.)
Immunogen	Recombinant protein encompassing a sequence within the center region of human ARHGEF18. The exact sequence is proprietary.
Purification	Purified by antigen-affinity chromatography.
Conjugation	Unconjugated

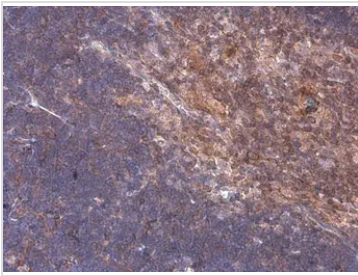
Note

For laboratory research use only. Not for any clinical, therapeutic, or diagnostic use in humans or animals. Not for animal or human consumption.

Purchasers shall not, and agree not to enable third parties to, analyze, copy, reverse engineer or otherwise attempt to determine the structure or sequence of the product.



For full product information, images and publications, please visit our [website](#).

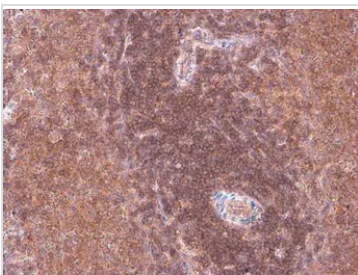
DATA IMAGES

GTX102223 IHC-P Image

ARHGEF18 antibody detects ARHGEF18 protein at cytoplasm by immunohistochemical analysis.

Sample: Paraffin-embedded mouse thymus gland.

ARHGEF18 stained by ARHGEF18 antibody (GTX102223) diluted at 1:500.

Antigen Retrieval: Citrate buffer, pH 6.0, 15 min

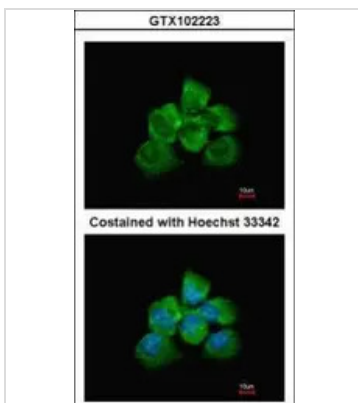

GTX102223 IHC-P Image

ARHGEF18 antibody detects ARHGEF18 protein at cell membrane and cytoplasm by immunohistochemical analysis.

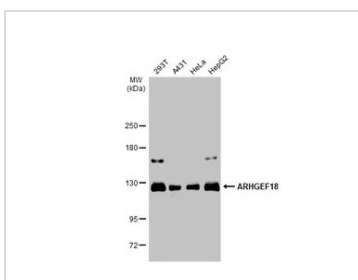
Sample: Paraffin-embedded rat spleen.

ARHGEF18 stained by ARHGEF18 antibody (GTX102223) diluted at 1:500.

Antigen Retrieval: Citrate buffer, pH 6.0, 15 min


GTX102223 ICC/IF Image

Immunofluorescence analysis of methanol-fixed A431, using ARHGEF18(GTX102223) antibody at 1:200 dilution.


GTX102223 WB Image

Various whole cell extracts (30 µg) were separated by 5% SDS-PAGE, and the membrane was blotted with ARHGEF18 antibody (GTX102223) diluted at 1:1000. The HRP-conjugated anti-rabbit IgG antibody (GTX213110-01) was used to detect the primary antibody.



For full product information, images and publications, please visit our [website](https://www.genetex.com).