

RPL13A antibody [N1C3]

Cat. No. GTX102228

Host	Rabbit
Clonality	Polyclonal
Isotype	IgG
Applications	WB, ICC/IF, IHC-P
Reactivity	Human, Zebrafish

Package
100 µl, 25 µl

Applications

Application Note

*Optimal dilutions/concentrations should be determined by the researcher.

Suggested dilution	Recommended dilution
WB	1:500-1:3000
ICC/IF	1:100-1:1000
IHC-P	1:100-1:1000

Not tested in other applications.

Calculated MW 24 kDa. ([Note](#))

Properties

Form	Liquid
Buffer	PBS, 1% BSA, 20% Glycerol
Preservative	0.01% Thimerosal
Storage	Store as concentrated solution. Centrifuge briefly prior to opening vial. For short-term storage (1-2 weeks), store at 4°C. For long-term storage, aliquot and store at -20°C or below. Avoid multiple freeze-thaw cycles.
Concentration	0.86 mg/ml (Please refer to the vial label for the specific concentration.)
Immunogen	Recombinant protein encompassing a sequence within the center region of human RPL13A. The exact sequence is proprietary.
Purification	Purified by antigen-affinity chromatography.
Conjugation	Unconjugated

Note

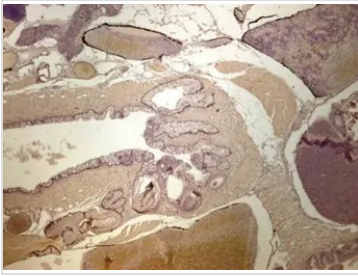
For laboratory research use only. Not for any clinical, therapeutic, or diagnostic use in humans or animals. Not for animal or human consumption.

Purchasers shall not, and agree not to enable third parties to, analyze, copy, reverse engineer or otherwise attempt to determine the structure or sequence of the product.



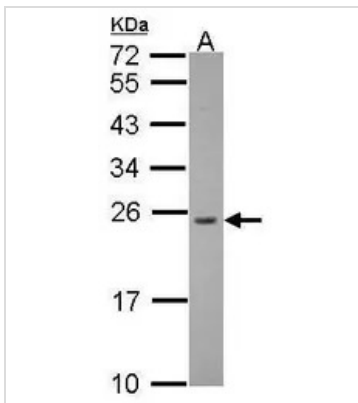
For full product information, images and publications, please visit our [website](#).

DATA IMAGES



GTX102228 IHC-P Image

Immunohistochemical analysis of paraffin-embedded zebrafish tissue, using RPL13A antibody [N1C3] (GTX102228) at 1:300 dilution.



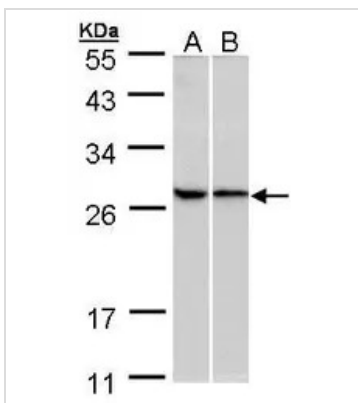
GTX102228 WB Image

Sample (30 µg of whole cell lysate)

A: zebrafish heart

12% SDS PAGE

GTX102228 diluted at 1:500



GTX102228 WB Image

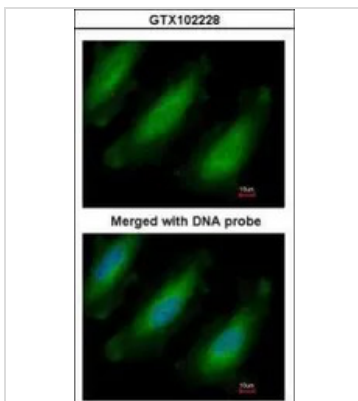
Sample (30 ug of whole cell lysate)

A:293T

B:HeLa

10% SDS PAGE

GTX102228 diluted at 1:500



GTX102228 ICC/IF Image

Immunofluorescence analysis of paraformaldehyde-fixed HeLa, using RPL13A(GTX102228) antibody at 1:200 dilution.



For full product information, images and publications, please visit our [website](https://www.genetex.com).