

XBP1 antibody [N3C3]

Cat. No. GTX102229

Host	Rabbit
Clonality	Polyclonal
Isotype	IgG
Applications	WB, ICC/IF, IHC-P
Reactivity	Human, Mouse, Rat

References (4)

★★★★★ Review (1)

Package

100 µl, 25 µl

Applications

Application Note

*Optimal dilutions/concentrations should be determined by the researcher.

Suggested dilution	Recommended dilution
WB	1:500-1:3000
ICC/IF	1:100-1:1000
IHC-P	1:100-1:1000

Not tested in other applications.

Calculated MW 29 kDa. ([Note](#))

Properties

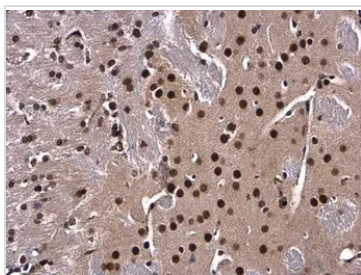
Form	Liquid
Buffer	PBS, 20% Glycerol
Preservative	0.025% ProClin 300
Storage	Store as concentrated solution. Centrifuge briefly prior to opening vial. For short-term storage (1-2 weeks), store at 4°C. For long-term storage, aliquot and store at -20°C or below. Avoid multiple freeze-thaw cycles.
Concentration	1.55 mg/ml (Please refer to the vial label for the specific concentration.)
Immunogen	Recombinant protein encompassing a sequence within the center region of human XBP1. The exact sequence is proprietary.
Purification	Purified by antigen-affinity chromatography.
Conjugation	Unconjugated

Note

For laboratory research use only. Not for any clinical, therapeutic, or diagnostic use in humans or animals. Not for animal or human consumption.

Purchasers shall not, and agree not to enable third parties to, analyze, copy, reverse engineer or otherwise attempt to determine the structure or sequence of the product.

For full product information, images and publications, please visit our [website](#).

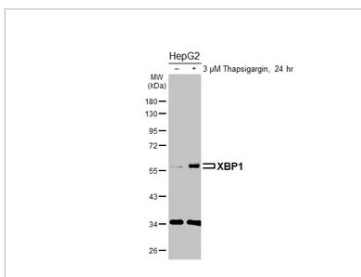
DATA IMAGES

GTx102229 IHC-P Image

XBP1 antibody [N3C3] detects XBP1 protein at nucleus in mouse brain by immunohistochemical analysis.

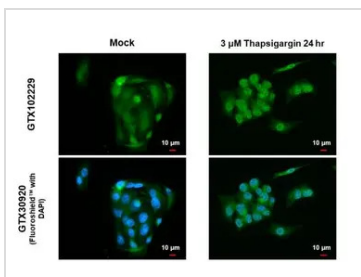
Sample: Paraffin-embedded mouse brain.

XBP1 antibody [N3C3] (GTx102229) diluted at 1:500.

Antigen Retrieval: Citrate buffer, pH 6.0, 15 min


GTx102229 WB Image

Untreated (-) and treated (+) HepG2 whole cell extracts (30 μ g) were separated by 10% SDS-PAGE, and the membrane was blotted with XBP1 antibody [N3C3] (GTx102229) diluted at 1:1000. The HRP-conjugated anti-rabbit IgG antibody (GTx213110-01) was used to detect the primary antibody.

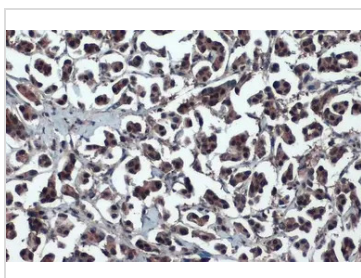

GTx102229 ICC/IF Image

XBP1 antibody [N3C3] detects XBP1 protein at nucleus by immunofluorescent analysis.

Sample: HepG2 cells were fixed in 4% paraformaldehyde at RT for 15 min.

Green: XBP1 stained by XBP1 antibody [N3C3] (GTx102229) diluted at 1:500.

Blue: Fluoroshield with DAPI (GTx30920).

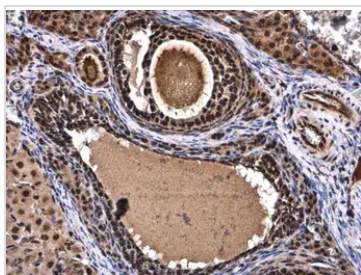

GTx102229 IHC-P Image

XBP1 antibody [N3C3] detects XBP1 protein at cytoplasm and nucleus by immunohistochemical analysis.

Sample: Paraffin-embedded human breast carcinoma.

XBP1 stained by XBP1 antibody [N3C3] (GTx102229) diluted at 1:1000.

Antigen Retrieval: Citrate buffer, pH 6.0, 15 min


GTx102229 IHC-P Image

XBP1 antibody [N3C3] detects XBP1 protein at nucleus in rat ovary by immunohistochemical analysis.

Sample: Paraffin-embedded rat ovary.

XBP1 antibody [N3C3] (GTx102229) diluted at 1:500.

Antigen Retrieval: Citrate buffer, pH 6.0, 15 min



For full product information, images and publications, please visit our [website](http://www.genetex.com).