

## TSFM antibody

Cat. No. GTX102238

Host	Rabbit
Clonality	Polyclonal
Isotype	IgG
Applications	WB, ICC/IF, IHC-P
Reactivity	Human

Package  
100 µl, 25 µl

## Applications

## Application Note

\*Optimal dilutions/concentrations should be determined by the researcher.

Suggested dilution	Recommended dilution
WB	1:500-1:3000
ICC/IF	1:100-1:1000
IHC-P	1:100-1:1000

Not tested in other applications.

Calculated MW 35 kDa. ( [Note](#) )

## Properties

Form	Liquid
Buffer	PBS, 1% BSA, 20% Glycerol
Preservative	0.01% Thimerosal
Storage	Store as concentrated solution. Centrifuge briefly prior to opening vial. For short-term storage (1-2 weeks), store at 4°C. For long-term storage, aliquot and store at -20°C or below. Avoid multiple freeze-thaw cycles.
Concentration	1 mg/ml (Please refer to the vial label for the specific concentration.)
Immunogen	Recombinant protein encompassing a sequence within the center region of human TSFM. The exact sequence is proprietary.
Purification	Purified by antigen-affinity chromatography.
Conjugation	Unconjugated

## Note

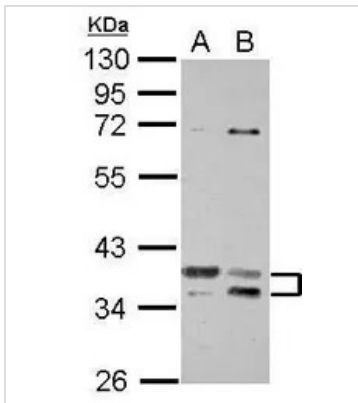
For laboratory research use only. Not for any clinical, therapeutic, or diagnostic use in humans or animals. Not for animal or human consumption.

Purchasers shall not, and agree not to enable third parties to, analyze, copy, reverse engineer or otherwise attempt to determine the structure or sequence of the product.



For full product information, images and publications, please visit our [website](#).

## DATA IMAGES



### GTX102238 WB Image

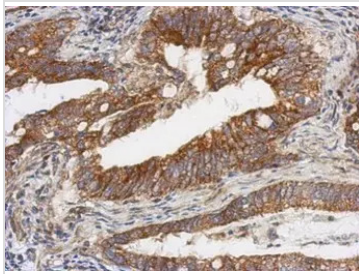
Sample (30 ug of whole cell lysate)

A: Jurkat

B: K562

10% SDS PAGE

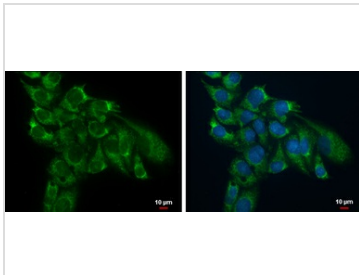
GTX102238 diluted at 1:1000



### GTX102238 IHC-P Image

Immunohistochemical analysis of paraffin-embedded human gastric cancer, using TSFM(GTX102238) antibody at 1:500 dilution.

Antigen Retrieval: Trilogy™ (EDTA based, pH 8.0) buffer, 15min



### GTX102238 ICC/IF Image

TSFM antibody detects TSFM protein at mitochondria by immunofluorescent analysis.

Sample: Hep G2 cells were fixed in 2% paraformaldehyde/culture medium at 37°C for 30 min.

Green: TSFM protein stained by TSFM antibody (GTX102238) diluted at 1:500.

Blue: Hoechst 33342 staining.

Scale bar = 10 μm.



For full product information, images and publications, please visit our [website](https://www.genetex.com).