

ORP150 antibody [C2C3], C-term

Cat. No. GTX102255

Host	Rabbit
Clonality	Polyclonal
Isotype	IgG
Applications	WB, ICC/IF, IHC-P
Reactivity	Human, Mouse, Rat, Plant

References (11)

Package

100 µl, 25 µl

Applications

Application Note

*Optimal dilutions/concentrations should be determined by the researcher.

Suggested dilution	Recommended dilution
WB	1:500-1:3000
ICC/IF	1:100-1:1000
IHC-P	1:100-1:1000

Not tested in other applications.

Calculated MW 111 kDa. ([Note](#))

Properties

Form	Liquid
Buffer	PBS, 1% BSA, 20% Glycerol
Preservative	0.025% ProClin 300
Storage	Store as concentrated solution. Centrifuge briefly prior to opening vial. For short-term storage (1-2 weeks), store at 4°C. For long-term storage, aliquot and store at -20°C or below. Avoid multiple freeze-thaw cycles.
Concentration	0.27 mg/ml (Please refer to the vial label for the specific concentration.)
Immunogen	Recombinant protein encompassing a sequence within the C-terminus region of human ORP150. The exact sequence is proprietary.
Purification	Purified by antigen-affinity chromatography.
Conjugation	Unconjugated

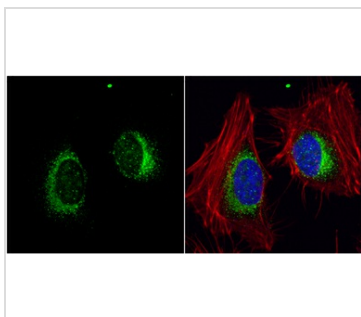
Note

For laboratory research use only. Not for any clinical, therapeutic, or diagnostic use in humans or animals. Not for animal or human consumption.

Purchasers shall not, and agree not to enable third parties to, analyze, copy, reverse engineer or otherwise attempt to determine the structure or sequence of the product.

For full product information, images and publications, please visit our [website](#).

DATA IMAGES

**GTX102255 ICC/IF Image**

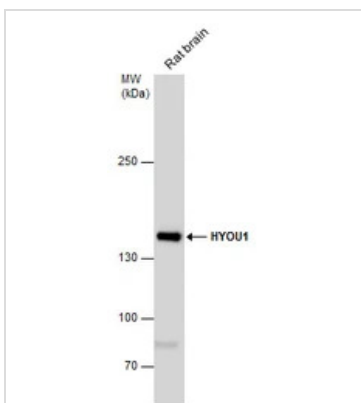
ORP150 antibody [C2C3], C-term detects ORP150 protein at endoplasmic reticulum by immunofluorescent analysis.

Sample: HeLa cells were fixed in 4% paraformaldehyde at RT for 15 min.

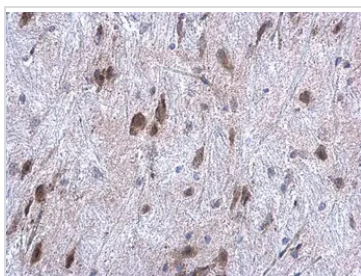
Green: ORP150 protein stained by ORP150 antibody [C2C3], C-term (GTX102255) diluted at 1:200.

Red: phalloidin, a cytoskeleton marker, stained by phalloidin (invitrogen, A12380) diluted at 1:200.

Blue: Hoechst 33342 staining.

**GTX102255 WB Image**

ORP150 antibody detects ORP150 protein by western blot analysis. Rat tissue extracts (50 µg) was separated by 5% SDS-PAGE, and blotted with ORP150 antibody (GTX102255) diluted by 1:1000. The HRP-conjugated anti-rabbit IgG antibody (GTX121310-01) was used to detect the primary antibody.

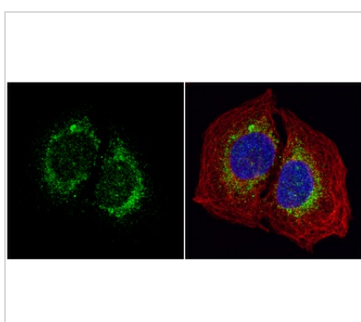
**GTX102255 IHC-P Image**

ORP150 antibody [C2C3], C-term detects ORP150 protein at cytoplasm on mouse fore brain by immunohistochemical analysis.

Sample: Paraffin-embedded mouse fore brain.

ORP150 antibody [C2C3], C-term (GTX102255) diluted at 1:500.

Antigen Retrieval: Trilogy™ (EDTA based, pH 8.0) buffer, 15min

**GTX102255 ICC/IF Image**

ORP150 antibody [C2C3], C-term detects ORP150 protein at cytoplasm by immunofluorescent analysis.

Sample: U2OS cells were fixed in 4% paraformaldehyde at RT for 15 min.

Green: ORP150 protein stained by ORP150 antibody [C2C3], C-term (GTX102255) diluted at 1:1000.

Red: alpha Tubulin, a cytoskeleton marker, stained by alpha Tubulin antibody [GT114] (GTX628802) diluted at 1:1000.

Blue: Hoechst 33342 staining.



For full product information, images and publications, please visit our [website](#).