

NDUFV2 antibody

Cat. No. GTX102259

Host	Rabbit
Clonality	Polyclonal
Isotype	IgG
Applications	WB, IHC-P
Reactivity	Human, Mouse, Rat

References (1)

Package

100 µl, 25 µl

Applications

Application Note

*Optimal dilutions/concentrations should be determined by the researcher.

Suggested dilution	Recommended dilution
WB	1:500-1:3000
IHC-P	1:100-1:1000

Not tested in other applications.

Calculated MW 27 kDa. ([Note](#))

Properties

Form	Liquid
Buffer	PBS, 10% Glycerol
Preservative	0.01% Thimerosal
Storage	Store as concentrated solution. Centrifuge briefly prior to opening vial. For short-term storage (1-2 weeks), store at 4°C. For long-term storage, aliquot and store at -20°C or below. Avoid multiple freeze-thaw cycles.
Concentration	0.44 mg/ml (Please refer to the vial label for the specific concentration.)
Immunogen	Recombinant protein encompassing a sequence within the center region of human NDUFV2. The exact sequence is proprietary.
Purification	Purified by antigen-affinity chromatography.
Conjugation	Unconjugated

Note

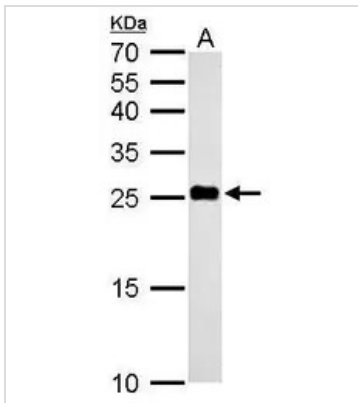
For laboratory research use only. Not for any clinical, therapeutic, or diagnostic use in humans or animals. Not for animal or human consumption.

Purchasers shall not, and agree not to enable third parties to, analyze, copy, reverse engineer or otherwise attempt to determine the structure or sequence of the product.



For full product information, images and publications, please visit our [website](#).

DATA IMAGES



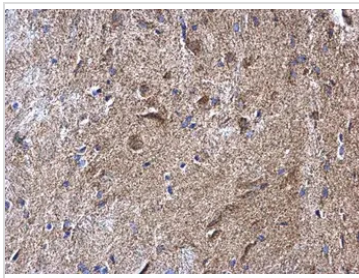
GTx102259 WB Image

NDUFV2 antibody detects NDUFV2 protein by Western blot analysis.

A. 50 µg mouse liver lysate/extract

12 % SDS-PAGE

NDUFV2 antibody (GTx102259) dilution: 1:500



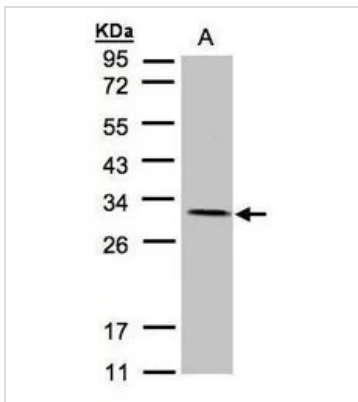
GTx102259 IHC-P Image

NDUFV2 antibody detects NDUFV2 protein at mitochondria on mouse heart by immunohistochemical analysis.

Sample: Paraffin-embedded mouse heart.

NDUFV2 antibody (GTx102259) diluted at 1:1000.

Antigen Retrieval: Trilogy™ (EDTA based, pH 8.0) buffer, 15min



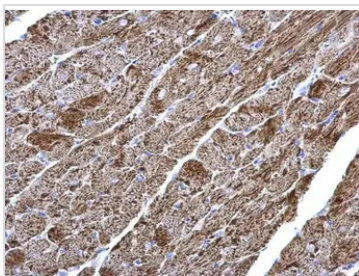
GTx102259 WB Image

Sample(30 µg of whole cell lysate)

A:A431(GTx27909)

12% SDS PAGE

GTx102259 diluted at 1:1500



GTx102259 IHC-P Image

NDUFV2 antibody detects NDUFV2 protein at mitochondria on mouse heart by immunohistochemical analysis.

Sample: Paraffin-embedded mouse heart.

NDUFV2 antibody (GTx102259) diluted at 1:1000.

Antigen Retrieval: Trilogy™ (EDTA based, pH 8.0) buffer, 15min



For full product information, images and publications, please visit our [website](https://www.genetex.com).