

## CDC25A antibody

**Cat. No. GTX102308**

<b>Host</b>	Rabbit
<b>Clonality</b>	Polyclonal
<b>Isotype</b>	IgG
<b>Applications</b>	WB, IHC-P
<b>Reactivity</b>	Human, Mouse, Rat

References ( 4 )

★★★★★ Review ( 1 )

Package

100 µl, 25 µl

## Applications

**Application Note**

\*Optimal dilutions/concentrations should be determined by the researcher.

Suggested dilution	Recommended dilution
WB	1:500-1:3000
IHC-P	1:100-1:1000

Not tested in other applications.

**Calculated MW** 59 kDa. ( [Note](#) )

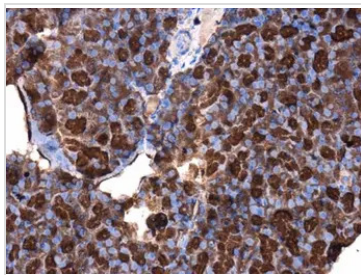
## Properties

<b>Form</b>	Liquid
<b>Buffer</b>	0.1M Tris, 0.1M Glycine, 10% Glycerol
<b>Preservative</b>	0.01% Thimerosal
<b>Storage</b>	Store as concentrated solution. Centrifuge briefly prior to opening vial. For short-term storage (1-2 weeks), store at 4°C. For long-term storage, aliquot and store at -20°C or below. Avoid multiple freeze-thaw cycles.
<b>Concentration</b>	1 mg/ml (Please refer to the vial label for the specific concentration.)
<b>Immunogen</b>	Recombinant protein encompassing a sequence within the N-terminus region of human CDC25A. The exact sequence is proprietary.
<b>Purification</b>	Purified by antigen-affinity chromatography.
<b>Conjugation</b>	Unconjugated
<b>Note</b>	For laboratory research use only. Not for any clinical, therapeutic, or diagnostic use in humans or animals. Not for animal or human consumption.  Purchasers shall not, and agree not to enable third parties to, analyze, copy, reverse engineer or otherwise attempt to determine the structure or sequence of the product.



For full product information, images and publications, please visit our [website](#).

## DATA IMAGES

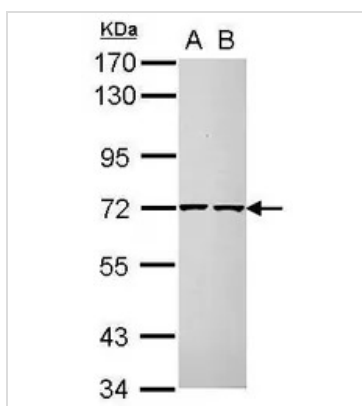
**GTx102308 IHC-P Image**

CDC25A antibody detects CDC25A protein at cytoplasm in rat pancreas by immunohistochemical analysis.

Sample: Paraffin-embedded rat pancreas.

CDC25A antibody (GTx102308) diluted at 1:500.

Antigen Retrieval: Citrate buffer, pH 6.0, 15 min

**GTx102308 WB Image**

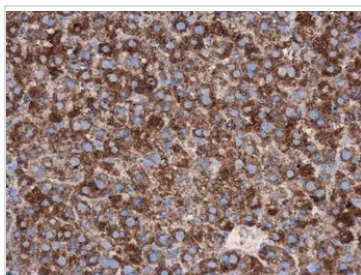
Sample (30 ug of whole cell lysate)

A: H1299

B: MCF-7

7.5% SDS PAGE

GTx102308 diluted at 1:1000

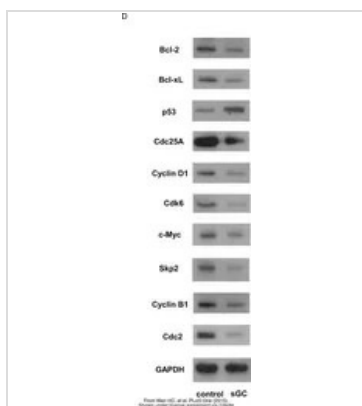
**GTx102308 IHC-P Image**

CDC25A antibody detects CDC25A protein at cytoplasm in mouse liver by immunohistochemical analysis.

Sample: Paraffin-embedded mouse liver.

CDC25A antibody (GTx102308) diluted at 1:500.

Antigen Retrieval: Citrate buffer, pH 6.0, 15 min

**GTx102308 WB Image**

The data was published in the journal PLoS One in 2015. [PMID: 25928539](https://pubmed.ncbi.nlm.nih.gov/25928539/)



For full product information, images and publications, please visit our [website](http://www.genetex.com).