

Cardiac Troponin I antibody [8E10]

Cat. No. GTX10232

Host	Mouse
Clonality	Monoclonal
Isotype	IgG1
Applications	WB, IP, Immunoassay, IHC, Purification
Reactivity	Human, Rabbit, Goat, Bovine, Cat, Dog, Pig

Package
200 µg

Applications

Application Note

*Optimal dilutions/concentrations should be determined by the researcher.

Suggested dilution	Recommended dilution
WB	Assay dependent
IP	Assay dependent
Immunoassay	Assay dependent
IHC	Assay dependent
Purification	Assay dependent

Not tested in other applications.

Calculated MW 24 kDa. ([Note](#))

Product Note No cross-reactivity with skeletal muscle Tnl.

Properties

Form	Liquid
Buffer	PBS
Preservative	0.09% Sodium azide
Storage	Store as concentrated solution. Centrifuge briefly prior to opening vial. Store at 4°C.
Concentration	Batch dependent (Please refer to the vial label for the specific concentration.)
Immunogen	Free human cardiac troponin I, native human cardiac troponin complex, or human cardiac troponin I peptides.
Purification	Protein A purified
Conjugation	Unconjugated



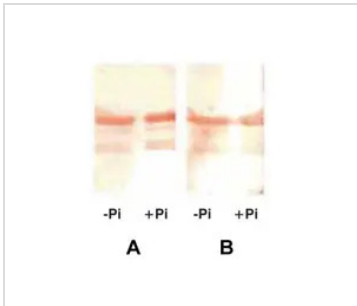
For full product information, images and publications, please visit our [website](#).

For laboratory research use only. Not for any clinical, therapeutic, or diagnostic use in humans or animals. Not for animal or human consumption.

Note

Purchasers shall not, and agree not to enable third parties to, analyze, copy, reverse engineer or otherwise attempt to determine the structure or sequence of the product.

DATA IMAGES

**GTX10232 WB Image**

Recognition of the dephospho- and phospho- forms of human cardiac troponin I. A. Cardiac Troponin I antibody [10B11] (GTX10225); B. Cardiac Troponin I antibody [8E10] (GTX10232)



For full product information, images and publications, please visit our [website](#).