

Calpain 1 antibody [N3C2], Internal

Cat. No. GTX102340

| | |
|--------------|------------------------|
| Host | Rabbit |
| Clonality | Polyclonal |
| Isotype | IgG |
| Applications | WB, ICC/IF, IHC-P, IP |
| Reactivity | Human, Mouse, Squirrel |

References (8)

★★★★★ Review (1)

Package

100 µl, 25 µl

Applications

Application Note

*Optimal dilutions/concentrations should be determined by the researcher.

| Suggested dilution | Recommended dilution |
|--------------------|----------------------|
| WB | 1:500-1:3000 |
| ICC/IF | 1:100-1:1000 |
| IHC-P | 1:100-1:1000 |
| IP | 1:100-1:500 |

Not tested in other applications.

Calculated MW 82 kDa. ([Note](#))

Properties

| | |
|---------------|--|
| Form | Liquid |
| Buffer | 0.1M Tris, 0.1M Glycine, 20% Glycerol |
| Preservative | 0.01% Thimerosal |
| Storage | Store as concentrated solution. Centrifuge briefly prior to opening vial. For short-term storage (1-2 weeks), store at 4°C. For long-term storage, aliquot and store at -20°C or below. Avoid multiple freeze-thaw cycles. |
| Concentration | 0.97 mg/ml (Please refer to the vial label for the specific concentration.) |
| Immunogen | Recombinant protein encompassing a sequence within the center region of human Calpain 1. The exact sequence is proprietary. |
| Purification | Purified by antigen-affinity chromatography. |
| Conjugation | Unconjugated |

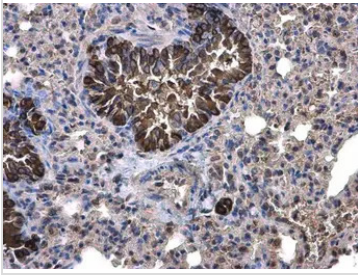
For full product information, images and publications, please visit our [website](#).

For laboratory research use only. Not for any clinical, therapeutic, or diagnostic use in humans or animals. Not for animal or human consumption.

Note

Purchasers shall not, and agree not to enable third parties to, analyze, copy, reverse engineer or otherwise attempt to determine the structure or sequence of the product.

DATA IMAGES



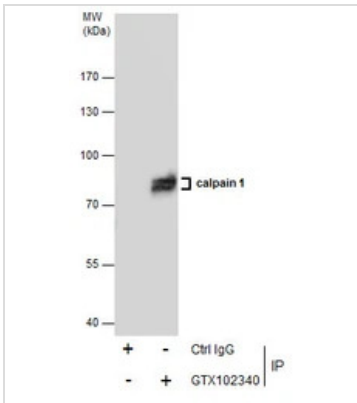
GTx102340 IHC-P Image

Calpain 1 antibody [N3C2], Internal detects Calpain 1 protein at cytoplasm on mouse lung by immunohistochemical analysis.

Sample: Paraffin-embedded mouse lung.

Calpain 1 antibody [N3C2], Internal (GTx102340) diluted at 1:500.

Antigen Retrieval: Trilogy™ (EDTA based, pH 8.0) buffer, 15min

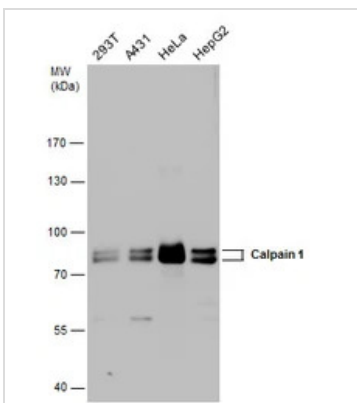


GTx102340 IP Image

Immunoprecipitation of Calpain 1 protein from A431 whole cell extracts using 5 µg of Calpain 1 antibody [N3C2], Internal (GTx102340).

Western blot analysis was performed using Calpain 1 antibody [N3C2], Internal (GTx102340).

EasyBlot anti-Rabbit IgG (GTx221666-01) was used as a secondary reagent.



GTx102340 WB Image

Calpain 1 antibody detects Calpain 1 protein by western blot analysis. Various whole cell extracts (30 µg) were separated by 7.5% SDS-PAGE, and the membrane was blotted with Calpain 1 antibody (GTx102340) diluted at a dilution of 1:1000. The HRP-conjugated anti-rabbit IgG antibody (GTx213110-01) was used to detect the primary antibody.



For full product information, images and publications, please visit our [website](https://www.genetex.com).