

Albumin antibody [15C7]

Cat. No. GTX10241

Host	Mouse
Clonality	Monoclonal
Isotype	IgG2b
Applications	WB, ELISA, Sandwich ELISA
Reactivity	Human

Package
100 µg

Applications

Application Note

*Optimal dilutions/concentrations should be determined by the researcher.

Suggested dilution	Recommended dilution
WB	Assay dependent
ELISA	Assay dependent
Sandwich ELISA	Assay dependent

Note : Capture : GTX10241, Detection : GTX10242/GTX10244 or Capture : GTX10242, Detection : GTX10241

Not tested in other applications.

Calculated MW	69 kDa. (Note)
Product Note	Does not react with bovine serum albumin, egg white albumin or human alpha fetoprotein.

Properties

Form	Liquid
Buffer	PBS
Preservative	0.09% Sodium azide
Storage	Store as concentrated solution. Centrifuge briefly prior to opening vial. Store at 4°C.
Concentration	Batch dependent (Please refer to the vial label for the specific concentration.)
Immunogen	Human serum albumin
Purification	Protein A purified
Conjugation	Unconjugated



For full product information, images and publications, please visit our [website](#).

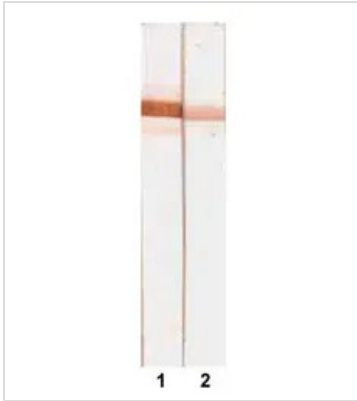
Date 2026 / 01 / 08 Page 1 of 2

For laboratory research use only. Not for any clinical, therapeutic, or diagnostic use in humans or animals. Not for animal or human consumption.

Note

Purchasers shall not, and agree not to enable third parties to, analyze, copy, reverse engineer or otherwise attempt to determine the structure or sequence of the product.

DATA IMAGES



GTX10241 WB Image

Albumin staining by Human Albumin antibodies in Western blotting after electrophoretic separation of human plasma proteins under reducing conditions. Lane 1: Human Albumin antibody [6B11] (GTX10244); Lane 2: Human Albumin antibody [15C7] (GTX10241)



For full product information, images and publications, please visit our [website](#).