

Albumin antibody

Cat. No. GTX102419

Host	Rabbit
Clonality	Polyclonal
Isotype	IgG
Application	WB, ICC/IF, IHC-P, IHC-Fr, IHC, in vitro
Reactivity	Human, Mouse, Rat, Cat, Dog

Reference (19)

★★★★★ Review (1)

Package

100 µl, 25 µl

APPLICATION

Application Note

*Optimal dilutions/concentrations should be determined by the researcher.

Suggested dilution	Recommended dilution
WB	1:500-1:100000
ICC/IF	1:100-1:1000
IHC-P	1:100-1:1000
IHC-Fr	1:100-1:1000
IHC	Assay dependent
in vitro	Assay dependent

Not tested in other applications.

Calculated MW 69 kDa. ([Note](#))

PROPERTIES

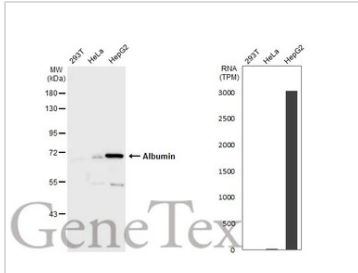
Form	Liquid
Buffer	PBS, 1% BSA, 20% Glycerol
Preservative	0.025% ProClin 300
Storage	Store as concentrated solution. Centrifuge briefly prior to opening vial. For short-term storage (1-2 weeks), store at 4°C. For long-term storage, aliquot and store at -20°C or below. Avoid multiple freeze-thaw cycles.
Concentration	0.45 mg/ml (Please refer to the vial label for the specific concentration.)
Immunogen	Recombinant protein encompassing a sequence within the C-terminus region of human Albumin. The exact sequence is proprietary.
Purification	Purified by antigen-affinity chromatography.
Conjugation	Unconjugated

For full product information, images and publications, please visit our [website](#).

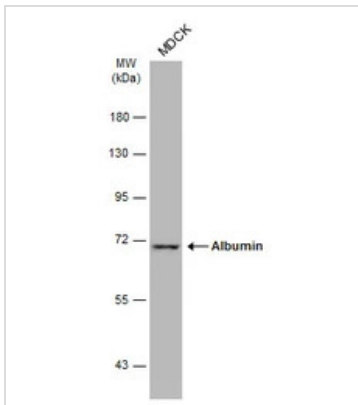
For laboratory research use only. Not for any clinical, therapeutic, or diagnostic use in humans or animals. Not for animal or human consumption.

Note

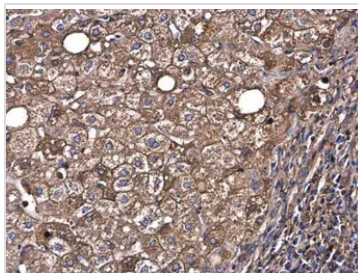
Purchasers shall not, and agree not to enable third parties to, analyze, copy, reverse engineer or otherwise attempt to determine the structure or sequence of the product.

DATA IMAGES

GTX102419 WB Image

Various whole cell extracts (30 µg) were separated by 7.5% SDS-PAGE, and the membrane was blotted with Albumin antibody (GTX102419) diluted at 1:1000. The HRP-conjugated anti-rabbit IgG antibody (GTX213110-01) was used to detect the primary antibody. Corresponding RNA expression data for the same cell lines are based on Human Protein Atlas program.


GTX102419 WB Image

Whole cell extract (30 µg) was separated by 7.5% SDS-PAGE, and the membrane was blotted with Albumin antibody (GTX102419) diluted at 1:1000. The HRP-conjugated anti-rabbit IgG antibody (GTX213110-01) was used to detect the primary antibody, and the signal was developed with Trident ECL plus-Enhanced.

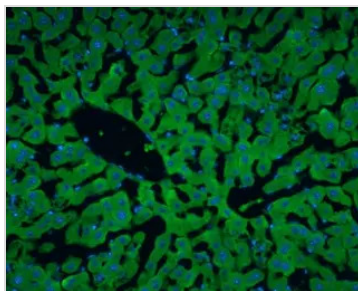

GTX102419 IHC-P Image

Albumin antibody detects Albumin protein at cytoplasm in human hepatocellular carcinoma by immunohistochemical analysis.

Sample: Paraffin-embedded human hepatocellular carcinoma.

Albumin antibody (GTX102419) diluted at 1:500.

Antigen Retrieval: Citrate buffer, pH 6.0, 15 min


GTX102419 IHC-Fr Image

Albumin antibody detects Albumin protein at cytoplasm in rat liver by immunohistochemical analysis.

Sample: Frozen section of rat liver.

Albumin antibody (GTX102419) diluted at 1:200.



For full product information, images and publications, please visit our [website](https://www.genetex.com).