

p63 antibody [N2C1], Internal

Cat. No. GTX102425

Host	Rabbit
Clonality	Polyclonal
Isotype	IgG
Applications	WB, ICC/IF, IHC-P, IHC-Fr, IP, PLA
Reactivity	Human, Mouse, Rat, Cat, Dog

References (65)

★★★★★ Review (4)

Package

100 µl, 25 µl

Applications

Application Note

*Optimal dilutions/concentrations should be determined by the researcher.

Suggested dilution	Recommended dilution
WB	1:500-1:3000
ICC/IF	1:100-1:1000
IHC-P	1:100-1:1000
IHC-Fr	Assay dependent
IP	1:100-1:500
PLA	Assay dependent

Not tested in other applications.

Calculated MW 77 kDa. ([Note](#))**Product Note** This antibody can detect endogenous p63 protein, and it may also recognize over-expressed p73 protein.

Properties

Form	Liquid
Buffer	PBS, 20% Glycerol
Preservative	0.025% ProClin 300
Storage	Store as concentrated solution. Centrifuge briefly prior to opening vial. For short-term storage (1-2 weeks), store at 4°C. For long-term storage, aliquot and store at -20°C or below. Avoid multiple freeze-thaw cycles.
Concentration	0.62 mg/ml (Please refer to the vial label for the specific concentration.)
Immunogen	Recombinant protein encompassing a sequence within the center region of human p63. The exact sequence is proprietary.
Purification	Purified by antigen-affinity chromatography.
Conjugation	Unconjugated

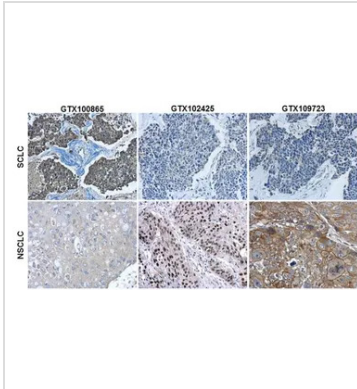


For full product information, images and publications, please visit our [website](#).

For laboratory research use only. Not for any clinical, therapeutic, or diagnostic use in humans or animals. Not for animal or human consumption.

Note

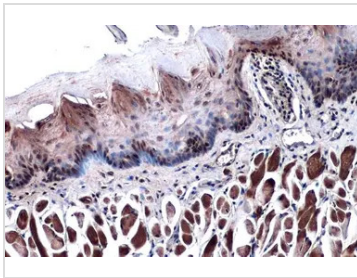
Purchasers shall not, and agree not to enable third parties to, analyze, copy, reverse engineer or otherwise attempt to determine the structure or sequence of the product.

DATA IMAGES

GTX102425 IHC-P Image

Immunohistochemical characterization of Synaptophysin (GTX100865), p63 (GTX102425) and Cytokeratin 7 (GTX109723) in human small cell lung cancer (SCLC) and non-small cell lung cancer (NSCLC) specimens. Sample: Paraffin-embedded human SCLC (upper panel) and NSCLC (lower panel).

The section was pre-treated using heat mediated antigen retrieval with sodium citrate buffer (pH6) for 15 mins. The section was then incubated with primary antibody at 1:500 overnight at 4°C and detected using an HRP conjugated avidin-biotin-peroxidase Complex system. DAB was used as the chromogen and counterstained with haematoxylin.

Antigen Retrieval: Citrate buffer, pH 6.0, 15 min

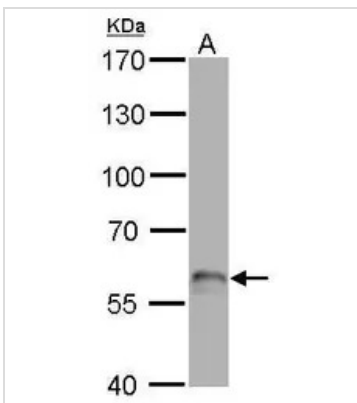

GTX102425 IHC-P Image

p63 antibody [N2C1], Internal detects p63 protein at nucleus by immunohistochemical analysis.

Sample: Paraffin-embedded mouse tongue.

p63 stained by p63 antibody [N2C1], Internal (GTX102425) diluted at 1:500.

Antigen Retrieval: Citrate buffer, pH 6.0, 15 min


GTX102425 WB Image

p63 antibody [N2C1], Internal detects TP63 protein by western blot analysis.

A. 50 µg rat brain lysate/extract

7.5% SDS-PAGE

p63 antibody [N2C1], Internal (GTX102425) dilution: 1:500

The HRP-conjugated anti-rabbit IgG antibody (GTX213110-01) was used to detect the primary antibody.



For full product information, images and publications, please visit our [website](https://www.genetex.com).