

RBBP5 antibody [N1N3]

Cat. No. GTX102440

Host	Rabbit
Clonality	Polyclonal
Isotype	IgG
Application	WB, ICC/IF
Reactivity	Human

Package
100 µl, 25 µl

APPLICATION

Application Note

*Optimal dilutions/concentrations should be determined by the researcher.

Suggested dilution	Recommended dilution
WB	1:500-1:3000
ICC/IF	1:100-1:1000

Not tested in other applications.

Calculated MW 59 kDa. ([Note](#))

PROPERTIES

Form	Liquid
Buffer	PBS, 10% Glycerol
Preservative	0.01% Thimerosal
Storage	Store as concentrated solution. Centrifuge briefly prior to opening vial. For short-term storage (1-2 weeks), store at 4°C. For long-term storage, aliquot and store at -20°C or below. Avoid multiple freeze-thaw cycles.
Concentration	0.11 mg/ml (Please refer to the vial label for the specific concentration.)
Immunogen	Recombinant protein encompassing a sequence within the center region of human RBBP5. The exact sequence is proprietary.
Purification	Purified by antigen-affinity chromatography.
Conjugation	Unconjugated

Note

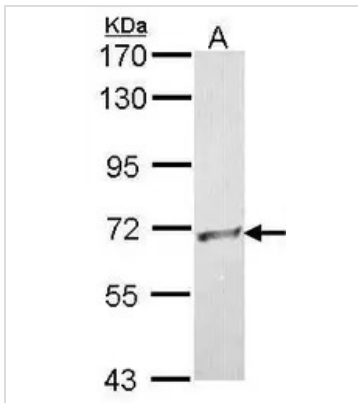
For laboratory research use only. Not for any clinical, therapeutic, or diagnostic use in humans or animals. Not for animal or human consumption.

Purchasers shall not, and agree not to enable third parties to, analyze, copy, reverse engineer or otherwise attempt to determine the structure or sequence of the product.



For full product information, images and publications, please visit our [website](#).

DATA IMAGES



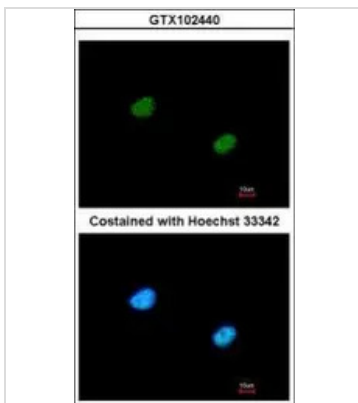
GTx102440 WB Image

Sample (30 ug of whole cell lysate)

A: A431 (GTx27909)

7.5% SDS PAGE

GTx102440 diluted at 1:500



GTx102440 ICC/IF Image

Immunofluorescence analysis of paraformaldehyde-fixed A431, using RBBP5(GTx102440) antibody at 1:200 dilution.



For full product information, images and publications, please visit our [website](https://www.genetex.com).