

P2X1 antibody

Cat. No. GTX10248

Host	Rabbit
Clonality	Polyclonal
Isotype	IgG
Application	ICC/IF, IHC
Reactivity	Rat

Package

50 µl

APPLICATION

Application Note

*Optimal dilutions/concentrations should be determined by the researcher.

Suggested dilution	Recommended dilution
ICC/IF	1:1000
IHC	1:1000

Not tested in other applications.

Calculated MW 45 kDa. ([Note](#))

PROPERTIES

Form	Liquid
Buffer	Serum
Preservative	0.05% Sodium azide
Storage	Store as concentrated solution. Centrifuge briefly prior to opening vial. For short-term storage (1-2 weeks), store at 4°C. For long-term storage, aliquot and store at -20°C or below. Avoid multiple freeze-thaw cycles.
Immunogen	GLQENMRTS Corresponding to residues 364-372 of the rat P2X1
Purification	Unpurified
Conjugation	Unconjugated

Note

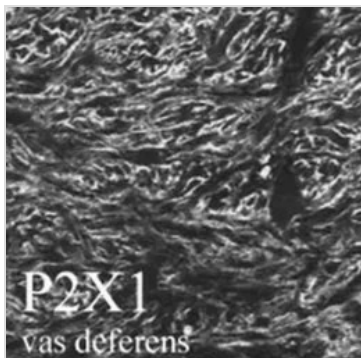
For laboratory research use only. Not for any clinical, therapeutic, or diagnostic use in humans or animals. Not for animal or human consumption.

Purchasers shall not, and agree not to enable third parties to, analyze, copy, reverse engineer or otherwise attempt to determine the structure or sequence of the product.



For full product information, images and publications, please visit our [website](#).

DATA IMAGES



GTX10248 IHC Image

IHC analysis of vas deferens using GTX10248 P2X1 antibody.



For full product information, images and publications, please visit our [website](#).