

Desmoglein 2 antibody [N1N2], N-term

Cat. No. GTX102508

Host	Rabbit
Clonality	Polyclonal
Isotype	IgG
Application	WB, ICC/IF, IHC-P
Reactivity	Human, Mouse

Reference (1)
 Package
 100 µl, 25 µl

APPLICATION

Application Note

*Optimal dilutions/concentrations should be determined by the researcher.

Suggested dilution	Recommended dilution
WB	1:500-1:3000
ICC/IF	1:100-1:1000
IHC-P	1:100-1:1000

Not tested in other applications.

Calculated MW 122 kDa. ([Note](#))

PROPERTIES

Form	Liquid
Buffer	PBS, 1% BSA, 20% Glycerol
Preservative	0.025% ProClin 300
Storage	Store as concentrated solution. Centrifuge briefly prior to opening vial. For short-term storage (1-2 weeks), store at 4°C. For long-term storage, aliquot and store at -20°C or below. Avoid multiple freeze-thaw cycles.
Concentration	0.36 mg/ml (Please refer to the vial label for the specific concentration.)
Immunogen	Recombinant protein encompassing a sequence within the Extracellular domain of human Desmoglein 2. The exact sequence is proprietary.
Purification	Purified by antigen-affinity chromatography.
Conjugation	Unconjugated

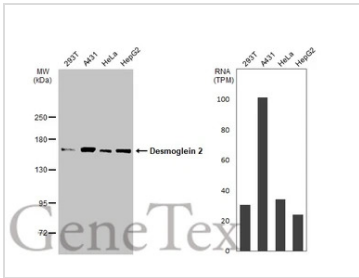
Note For laboratory research use only. Not for any clinical, therapeutic, or diagnostic use in humans or animals. Not for animal or human consumption.

Purchasers shall not, and agree not to enable third parties to, analyze, copy, reverse engineer or otherwise attempt to determine the structure or sequence of the product.



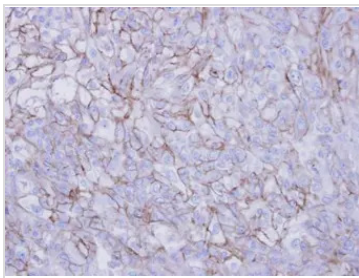
For full product information, images and publications, please visit our [website](#).

DATA IMAGES



GTX102508 WB Image

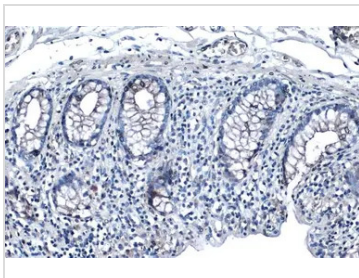
Various whole cell extracts (30 µg) were separated by 5% SDS-PAGE, and the membrane was blotted with Desmoglein 2 antibody [N1N2], N-term (GTX102508) diluted at 1:3000. The HRP-conjugated anti-rabbit IgG antibody (GTX213110-01) was used to detect the primary antibody.



GTX102508 IHC-P Image

Immunohistochemical analysis of paraffin-embedded DU145 xenograft, using Desmoglein-2 (GTX102508) antibody at 1:100 dilution.

Antigen Retrieval: Trilogy™ (EDTA based, pH 8.0) buffer, 15min



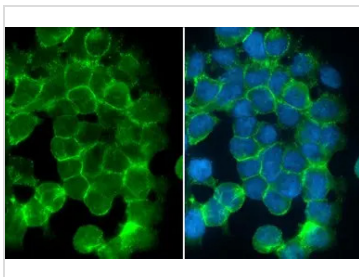
GTX102508 IHC-P Image

Desmoglein 2 antibody [N1N2], N-term detects Desmoglein 2 protein at cell membrane by immunohistochemical analysis.

Sample: Paraffin-embedded human colon cancer.

Desmoglein 2 stained by Desmoglein 2 antibody [N1N2], N-term (GTX102508) diluted at 1:500.

Antigen Retrieval: Citrate buffer, pH 6.0, 15 min



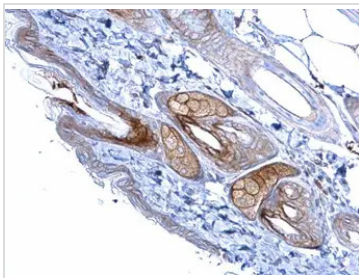
GTX102508 ICC/IF Image

Desmoglein 2 antibody [N1N2], N-term detects Desmoglein 2 protein at cell membrane by immunofluorescent analysis.

Sample: A431 cells were fixed in 4% paraformaldehyde at RT for 15 min.

Green: Desmoglein 2 stained by Desmoglein 2 antibody [N1N2], N-term (GTX102508) diluted at 1:500.

Blue: Fluoroshield with DAPI (GTX30920).



GTX102508 IHC-P Image

Desmoglein 2 antibody [N1N2], N-term detects Desmoglein 2 protein at cell membrane and cytoplasm in mouse skin by immunohistochemical analysis.

Sample: Paraffin-embedded mouse skin.

Desmoglein 2 antibody [N1N2], N-term (GTX102508) diluted at 1:500.

Antigen Retrieval: Trilogy™ (EDTA based, pH 8.0) buffer, 15min



For full product information, images and publications, please visit our [website](https://www.genetex.com).