

Dishevelled 3 antibody [N1N2], N-term

Cat. No. GTX102509

Host	Rabbit
Clonality	Polyclonal
Isotype	IgG
Applications	WB, ICC/IF, IHC-P, IHC-Fr, IP
Reactivity	Human, Mouse, Zebrafish

References (4)

Package

100 µl, 25 µl

Applications

Application Note

*Optimal dilutions/concentrations should be determined by the researcher.

Suggested dilution	Recommended dilution
WB	1:5000-1:20000
ICC/IF	1:100-1:1000
IHC-P	1:100-1:1000
IHC-Fr	Assay dependent
IP	Assay dependent

Not tested in other applications.

Calculated MW 78 kDa. ([Note](#))

Properties

Form	Liquid
Buffer	0.1M Tris, 0.1M Glycine, 10% Glycerol
Preservative	0.01% Thimerosal
Storage	Store as concentrated solution. Centrifuge briefly prior to opening vial. For short-term storage (1-2 weeks), store at 4°C. For long-term storage, aliquot and store at -20°C or below. Avoid multiple freeze-thaw cycles.
Concentration	0.99 mg/ml (Please refer to the vial label for the specific concentration.)
Immunogen	Recombinant protein encompassing a sequence within the N-terminus region of human Dishevelled 3. The exact sequence is proprietary.
Purification	Purified by antigen-affinity chromatography.
Conjugation	Unconjugated



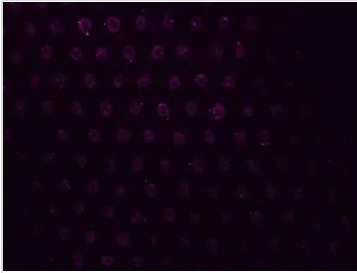
For full product information, images and publications, please visit our [website](#).

For laboratory research use only. Not for any clinical, therapeutic, or diagnostic use in humans or animals. Not for animal or human consumption.

Note

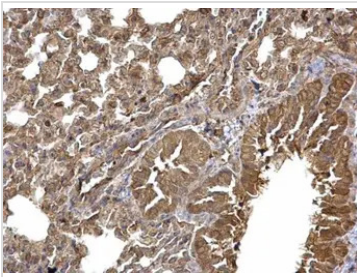
Purchasers shall not, and agree not to enable third parties to, analyze, copy, reverse engineer or otherwise attempt to determine the structure or sequence of the product.

DATA IMAGES

**GTX102509 Image**

cytoplasm in the photoreceptor

Immunohistochemistry of flat-mounted zebrafish retina using an antibody against Dishevelled 3 antibody [N1N2], N-term (GTX102509) at a 1:200 dilution.

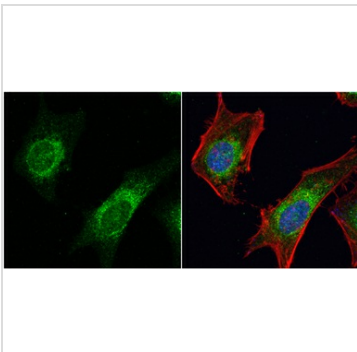
**GTX102509 IHC-P Image**

Dishevelled 3 antibody [N1N2], N-term detects Dishevelled 3 protein at cytoplasm on mouse lung by immunohistochemical analysis.

Sample: Paraffin-embedded mouse lung.

Dishevelled 3 antibody [N1N2], N-term (GTX102509) diluted at 1:500.

Antigen Retrieval: Trilogy™ (EDTA based, pH 8.0) buffer, 15min

**GTX102509 ICC/IF Image**

Dishevelled 3 antibody [N1N2], N-term detects Dishevelled 3 protein at cytoplasm by immunofluorescent analysis.

Sample: HeLa cells were fixed in 4% paraformaldehyde at RT for 15 min.

Green: Dishevelled 3 protein stained by Dishevelled 3 antibody [N1N2], N-term (GTX102509) diluted at 1:500.

Red: phalloidin, a cytoskeleton marker, stained by phalloidin (invitrogen, A12380) diluted at 1:200.

Blue: Hoechst 33342 staining.



For full product information, images and publications, please visit our [website](#).