

MTMR2 antibody [C1C3]

Cat. No. GTX102633

Host	Rabbit
Clonality	Polyclonal
Isotype	IgG
Application	WB
Reactivity	Human

Package
100 µl, 25 µl

APPLICATION

Application Note

*Optimal dilutions/concentrations should be determined by the researcher.

Suggested dilution	Recommended dilution
WB	1:500-1:3000
Not tested in other applications.	

Calculated MW 73 kDa. ([Note](#))

PROPERTIES

Form	Liquid
Buffer	PBS, 1% BSA, 20% Glycerol
Preservative	0.01% Thimerosal
Storage	Store as concentrated solution. Centrifuge briefly prior to opening vial. For short-term storage (1-2 weeks), store at 4°C. For long-term storage, aliquot and store at -20°C or below. Avoid multiple freeze-thaw cycles.
Concentration	1 mg/ml (Please refer to the vial label for the specific concentration.)
Immunogen	Recombinant protein encompassing a sequence within the C-terminus region of human MTMR2. The exact sequence is proprietary.
Purification	Purified by antigen-affinity chromatography.
Conjugation	Unconjugated

Note

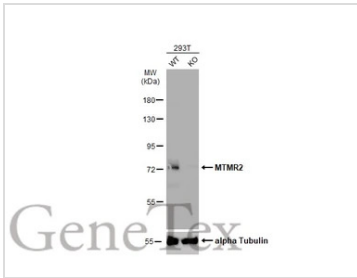
For laboratory research use only. Not for any clinical, therapeutic, or diagnostic use in humans or animals. Not for animal or human consumption.

Purchasers shall not, and agree not to enable third parties to, analyze, copy, reverse engineer or otherwise attempt to determine the structure or sequence of the product.



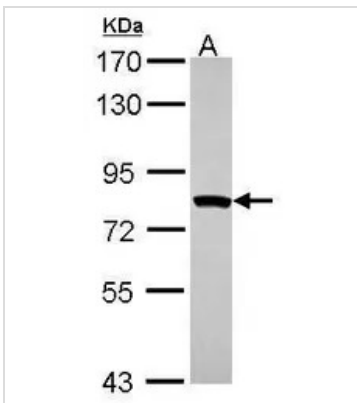
For full product information, images and publications, please visit our [website](#).

DATA IMAGES



GTX102633 WB Image

Wild-type (WT) and MTMR2 knockout (KO) HeLa cell extracts (30 μ g) were separated by 7.5% SDS-PAGE, and the membrane was blotted with MTMR2 antibody [C1C3] (GTX102633) diluted at 1:1000. The HRP-conjugated anti-rabbit IgG antibody (GTX213110-01) was used to detect the primary antibody, and the signal was developed with Trident ECL plus-Enhanced.



GTX102633 WB Image

Sample (30 ug of whole cell lysate)

A: U87-MG

7.5% SDS PAGE

GTX102633 diluted at 1:1000



For full product information, images and publications, please visit our [website](https://www.genetex.com).