

ACAT1 antibody [N1N3]

Cat. No. GTX102637

Host	Rabbit
Clonality	Polyclonal
Isotype	IgG
Application	WB, ICC/IF, IHC-P
Reactivity	Human, Mouse, Zebrafish

Reference (6)

★★★★☆ Review (1)

Package

100 µl, 25 µl

APPLICATION

Application Note

*Optimal dilutions/concentrations should be determined by the researcher.

Suggested dilution	Recommended dilution
WB	1:500-1:3000
ICC/IF	1:100-1:1000
IHC-P	1:100-1:1000

Not tested in other applications.

Calculated MW 45 kDa. ([Note](#))

PROPERTIES

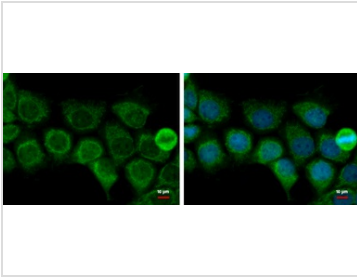
Form	Liquid
Buffer	0.1M Tris, 0.1M Glycine, 10% Glycerol
Preservative	0.01% Thimerosal
Storage	Store as concentrated solution. Centrifuge briefly prior to opening vial. For short-term storage (1-2 weeks), store at 4°C. For long-term storage, aliquot and store at -20°C or below. Avoid multiple freeze-thaw cycles.
Concentration	1 mg/ml (Please refer to the vial label for the specific concentration.)
Immunogen	Recombinant protein encompassing a sequence within the N-terminus region of human ACAT1. The exact sequence is proprietary.
Purification	Purified by antigen-affinity chromatography.
Conjugation	Unconjugated

Note For laboratory research use only. Not for any clinical, therapeutic, or diagnostic use in humans or animals. Not for animal or human consumption.

Purchasers shall not, and agree not to enable third parties to, analyze, copy, reverse engineer or otherwise attempt to determine the structure or sequence of the product.



For full product information, images and publications, please visit our [website](#).

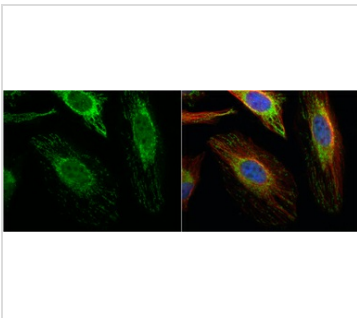
DATA IMAGES

GTx102637 ICC/IF Image

ACAT1 antibody [N1N3] detects ACAT1 protein at mitochondria by immunofluorescent analysis.

Sample: A431 cells were fixed in 2% paraformaldehyde/culture medium at 37°C for 30 min.

Green: ACAT1 protein stained by ACAT1 antibody [N1N3] (GTx102637) diluted at 1:500.

Blue: Hoechst 33342 staining.


GTx102637 ICC/IF Image

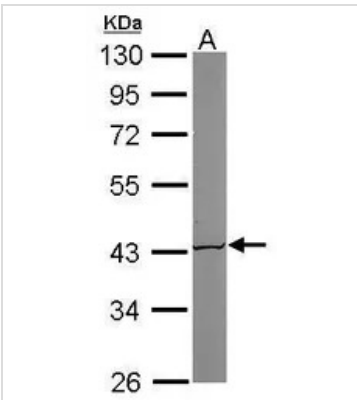
ACAT1 antibody [N1N3] detects ACAT1 protein at mitochondria by immunofluorescent analysis.

Sample: HeLa cells were fixed in 4% paraformaldehyde at RT for 15 min.

Green: ACAT1 protein stained by ACAT1 antibody [N1N3] (GTx102637) diluted at 1:500.

Red: alpha Tubulin, a cytoskeleton marker, stained by alpha Tubulin antibody [B-5-1-2] (GTx11304) diluted at 1:10000.

Blue: Hoechst 33342 staining.

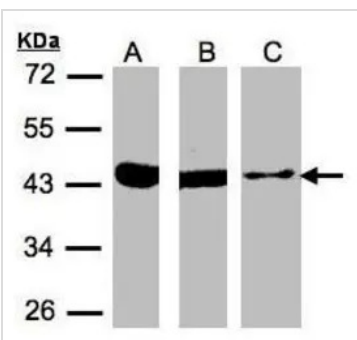

GTx102637 WB Image

Sample (50 ug of whole cell lysate)

A: Mouse brain

10% SDS PAGE

GTx102637 diluted at 1:1000


GTx102637 WB Image

Sample (30 µg of whole cell lysate)

A: 293T

B: A431 (GTx27909)

C: MOLT4 (GTx27912)

10% SDS PAGE

GTx102637 diluted at 1:500



For full product information, images and publications, please visit our [website](https://www.genetex.com).